



# Rangiora-Ashley Community Board

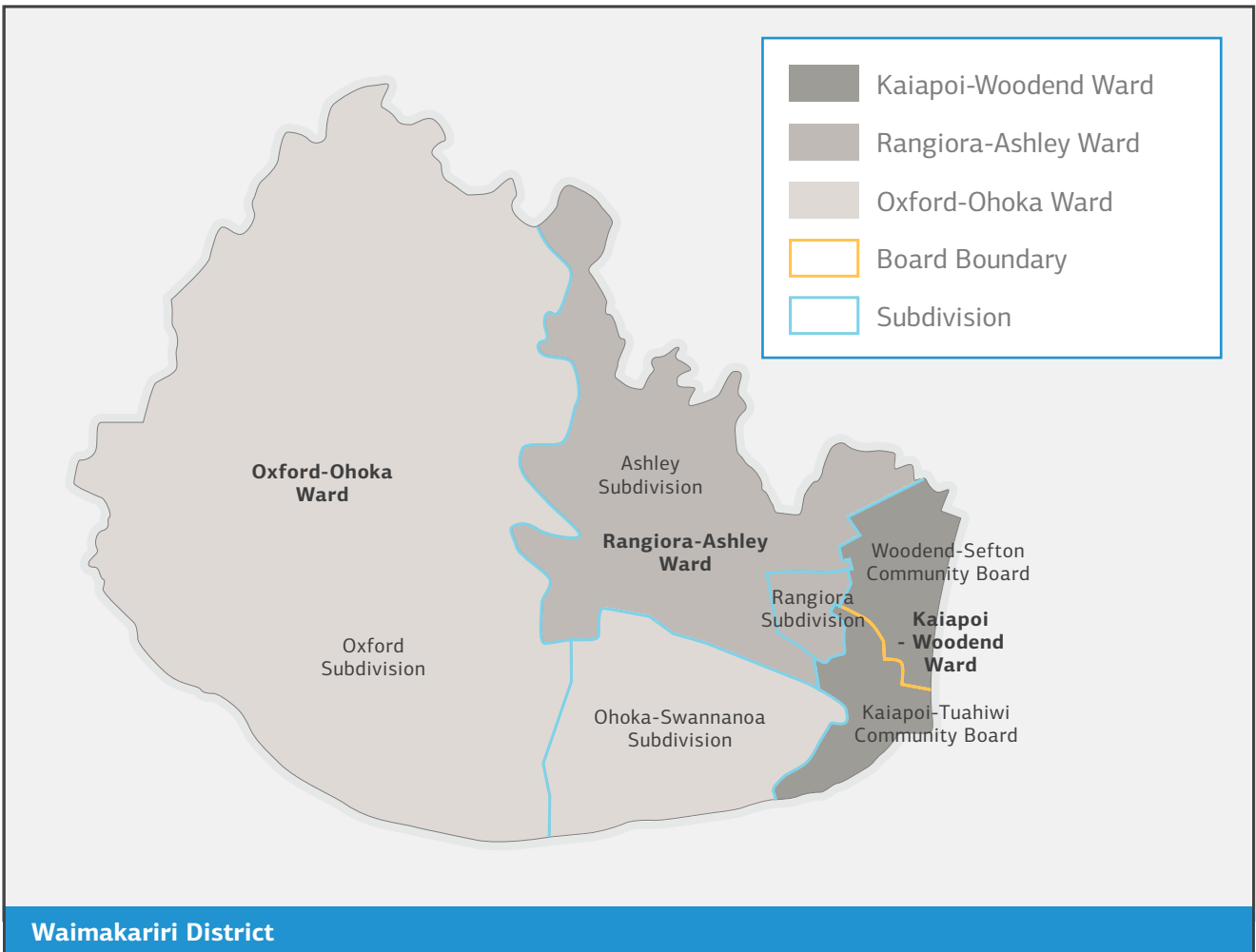
## Community Plan 2022-2025





Ward	Population
Rangiora-Ashley Ward	26,900
Oxford-Ohoka Ward	13,200
Kaiapoi-Woodend Ward	26,100
Subdivision	Population
Rangiora Subdivision	19,450
Ashley Subdivision	7,500

\* Representation statistics: 2021 population estimates



# Chairperson's Message

Dear Residents

The Rangiora-Ashley Community Board area represents a mix of urban and rural properties with diverse populations and interests. Rangiora is the main centre. The Ward boundaries extend west to include Fernside and Cust, and north over the Ashley River to include Ashley township, Loburn, North Loburn, Okuku, and west as far as the Garry River.

To ensure we elect Board members that reflect the needs of our diverse area, our Ward is divided into two subdivisions for Board elections. As a result, six members were elected from the Rangiora subdivision and two from the Ashley subdivision. Four Councillors, elected from across the Ward, are also appointed to the Board. The subdivision areas are determined on a population basis.

The Rangiora-Ashley Community Board fully supports the many local community groups across our Ward that do so much to ensure the needs and aspirations of our communities are met. We welcome them to attend any of our meetings to share their experiences, roles, and requirements. In addition, the Board has a limited discretionary grant fund available, some of which may assist groups with community projects. We meet on the second Wednesday of each month.

Much of the Board's recent focus has been on the continued development and improvements required in our Ward. To achieve good outcomes, we are involved with the Council and its Committees dealing with such things as reserves, cycleways, water scheme improvements, and road improvements. The Board also makes submissions on the Council's Annual and Long-Term Plans.

Some of our priorities are the continuation of the beautification of the town entrances, the promotion of road safety, including cycling, speed limit management in school zones and the provision of sufficient parking in Rangiora. The Board is pleased to see the completion of the Good Street development, an essential upgrade to the Rangiora Town Centre. This will become, over time, a significant attraction.

The Board supports the development of the new Rangiora Medical Centre by Te Whatu Ora and also believes a police presence in central Rangiora is essential.

A Community Board's primary role is to look after issues within our Ward, working with the Council and community for the betterment of the District. The Council seeks guidance and the Board's views on most issues affecting our Ward. In addition, the Board has representatives on many community organisations, especially those owned or managed by the Council.

The Board welcomes your views, as they are important to us. Do not hesitate to contact any Board member, the Council's Governance Team, or myself.



**Jim Gerard QSO**  
Chairman

Rangiora-Ashley Community Board



# About the Rangiora-Ashley Community Board

**The Waimakariri District is divided into three Wards, with the Rangiora-Ashley Ward covering predominantly the north-eastern and central areas of the Waimakariri District.**

From the south of the Ashley River/Rakahuri in the west along Bowicks Road, Ashley Road, Summerhill Road, Reids Road, Tippings Road, Howsons Road, Springbank Road, Tallotts Road, Oxford Road, Boundary Road, the Main Drain, Flaxton Road, Fernside Road, Lineside Road and Youngs Road.

Follow the Cam River to Boys Road, then Northbrook Road and along the boundary between Lot 2 DP80275 and Lot 2 DP306045 to Rangiora Woodend Road, along Rangiora Woodend Road to Smarts Road to the Ashley River/Rakahuri.

North of the Ashley River/Rakahuri in the west, the Rangiora-Ashley Ward commences on the northern boundary at the Okuku River; thence across Mt Thomas to the Garry River at the boundary of mesh block 2438500 and to the confluence of the Ashley River/Rakahuri and the Garry River.

The eastern boundary to the north of the Ashley River/Rakahuri follows between MB 2440301 and 2440302 to the Lower Sefton Road, Beatties Road, Upper Sefton Road, Bairds Road and Rangiora Leithfield Road to the District boundary.

## What is a Community Board?

The Local Government Act (2002) states that the role of a Community Board is to represent and advocate for the interests of its community. The Waimakariri District is currently divided into three Wards and four Community Boards, with the Rangiora-Ashley Community Board providing feedback, leadership, and support to residents within its community area.

The Rangiora-Ashley Community Board was elected for the first time in the October 2010 Local Body elections. The Board comprises six elected members from the urban area and two elected members from the rural areas, plus four appointed Councillors of the Waimakariri District Council, giving it a total of twelve members.

The Community Board is not the Council, nor is it a committee of the Council. Instead, the Board works collectively with the Council to achieve community goals. The Board is also responsible for any areas delegated to it by the Council.

## How does the Community Board do this?

- Taking an overview of the Council's services and projects affecting the Ward area, including water supply, sewerage, stormwater drainage, parks, recreational facilities, roading and traffic management projects
- Engaging with residents, community organisations, and groups in developing local solutions, keeping the public informed, and being visible and accessible
- By encouraging community participation in Community Board and Council decision-making
- Advocating to the Council on key issues and priorities for the community area, especially through the Annual and Long-Term planning and budgeting process
- Granting of leases or licences on reserves
- Working collaboratively with other Community Boards to promote an understanding of the work being done in the District as a whole
- By maintaining positive working relationships with key Council staff and management.

**If you are a resident or part of a local community group who wishes to raise any concerns or issues, please do not hesitate to contact a member of the Community Board for advice and help (see contact details provided on pages 8 to 9).**

# Performance Expectations 2022-2025

**The Rangiora-Ashley Community Board comprises of people who are passionate about the wellbeing of their community and believe in working together to bring positive change. The Board has therefore outlined the following expectations:**

- Develop and promote the Community Board as a vehicle for residents to seek assistance and advocacy in accessing Council services and consultation processes
- Develop positive working relationships with key Council staff and management. Develop closer links and relationships with key groups in the Rangiora-Ashley Ward area and significant District-wide organisations
- Develop strategies for increased involvement with the community
- Develop strategies for the Board to become a compelling, cohesive voice representing the community viewpoint at meetings and policy hearings
- Actively participate in Council business and the annual budget process to ensure equitable spending across the District whilst being mindful of rates' affordability
- Advocate for public transport that better serves both urban and rural communities
- Advocate to ensure the Ward has attractive streetscapes that enhance the community's visual profile
- Advocate in support of community initiatives that create safe, connected, and resilient communities
- Advocate in support of after-hours medical care at the Rangiora Medical Centre to ensure the community's mental and physical health and wellbeing
- Advocate for a New Zealand Police presence in the Rangiora Town Centre



Loburn



Cust Community Centre



Ashley War Memorial

# What's happening now and looking forward?

There are several projects underway in the Rangiora-Ashley Ward area. This section outlines those projects.



Millton Reserve

## Millton Reserve

In 2021, the Board approved a master plan for developing the wider Millton Reserve. This plan included an arboretum, expansion to the dog park, an area for the future North Canterbury Model Railway Club, and the extension of the croquet lawns and public toilets.

The Board has worked with Council staff to implement the plan. Thus far, the existing pines have been made safe, and the ground has been re-contoured to tidy the area for public use. Last year, the Soroptimists planted 15 specimen trees on site for their 100-year celebrations in 2023. Rangiora Rotary donated \$2,000 for trees which have been planted, and the Rangiora Lions Club fundraised and built several shelters in the dog park. The new fences for the dog park have been installed, and once the vegetation has been embedded, the area should become a significant future attraction and recreational area.

## Townsend Road Reserve

The Townsend Road Reserve is in Townsend Fields, in West Rangiora, and it will be a space for children to learn, play, and connect, as well as provide a fun community space for people of all ages.

The Townsend Road Reserve Upgrade contract for physical works has been awarded, and the work is anticipated to be completed in early 2024.



Townsend Road Reserve

## Dudley Park

The Board is proud of the youth-led initiatives to create a more vibrant and safer environment for young people in Dudley Park. As a result, the Board supported installing a deck and mural near the Dudley Skate Park initiated by the Waimakariri Youth Council.

The Board also granted permission for a local artist, Mel Eaton, to design and paint a mural on the public toilet block at Dudley Park as part of the park's beautification. The mural depicts a Blue Duck/ Whio, which is endemic to New Zealand and classed as endangered with a population of under 3000. Whio are taonga (treasured) to Māori and share a strong historical connection.



Dudley Skate Park

## Cenotaph Corner development

Council acquired 70 and 74 High Street to enable the Cenotaph Corner road re-alignment undertaken as part of the previous Rangiora Town Centre Strategy's implementation works, which occurred a few years after the Canterbury Earthquakes.

The location of these properties provides a focal point of two main roads in Rangiora which is considered of strategic significance in the context of the Rangiora Town Centre Strategy as they represent a crucial entry point to the central retail heart of the town.

As such, the board supports and looks forward to the successful divestment and development of this site in keeping with the town centre's unique character and quality commercial offerings.

## Loburn Domain

The Community Board has long supported the development of a War Memorial at the Loburn Domain.

It is essential to have a permanent commemorative structure where the local community can gather for Anzac Day and similar services. Such occasions are significant in bringing local history to the fore.

It is envisaged that the proposed memorial would be located on the northern part of the Domain, north of the upper car park, between the pottery shed and Loburn Whiterock Road. This area is currently open grass with some specimen trees.

Council staff, the Community Board representative and the War Memorial Committee collaborated on the design for the War Memorial, which the Council took out on tender in 2022.



Loburn Domain

Unfortunately, the costs quoted were significantly higher than the available budget. Therefore, the design had to be reconsidered to align with the current budget. The Council, Community Board and the Loburn Domain Advisory Group are working on developing a new design for the memorial.

## Beautify town entrances

The Board has a programme in mind with its General Landscaping Funds to continually improve and beautify the town entrances, including Oxford Road and Kippenberger Avenue.

Our town entrances provide a means of identifying and accessing our District towns for residents and visitors while presenting an opportunity for the Council to enhance our towns' attractiveness and welcome visitors to the region. The Board are therefore working closely with the Council on implementing the Town Entrances Strategy and Implementation Plan to ensure town entrances across the Ward will undergo some roading and aesthetic improvements.

## Local roading projects

The Board is committed to all local roading projects within its Ward, such as

- **Waka Kotahi funding**  
The Board is disappointed that Waka Kotahi chose not to fund all of the Council projects submitted through the National Land Transport Programme (NLTP), leaving the Council and the community to find the extra funding required to maintain a safe roading network. The Board is also troubled that the Council had to cut capital and maintenance expenditures on roading projects.
- **Southbrook Road safety improvements**  
Every day, 26,000 vehicles move up and down Southbrook Road and share this traffic space with residents, schools, and businesses. In early 2023, traffic signals were installed at the intersection of Southbrook Road and Torlesse Street, which improved safety and encouraged active movements within the area. However, traffic congestion is still a significant concern in this area, so the Board strongly supports the development of the eastern bypass.

The Board will advocate for sufficient attention to the conductivity and safety of certain sections of Ward's roading network, such as

the Townsend Road culvert (Rangiora), the Flaxton Road Roundabout (Rangiora) and the Stoneyflat/Chapel Roads intersection (Loburn).



Gravel Roads

- **Gravel roads**

The Board has concerns regarding the state of rural shingle and gravel roads in the District and will continue to advocate that more provisions be made for road maintenance in the Council's 2024/34 Long Term Plan.

- **River Road upgrade**

River Road currently has a semi-rural feel, being on the edge of Rangiora. The development of the wider area, including the redevelopment of the Millton Reserve, has increased the number of people using the area. This area also has high recreational demand for people walking and cycling.

The Board, therefore, supports the Council's proposed staged upgrade of River Road that will allow for the upgrading of the southern side of River Road, between Riverview Road and 61 River Road. This would address considerable drainage and maintenance issues, which are more frequent

in this section of River Road and significantly impact pedestrians and cyclists. The proposed upgrade also includes providing five car parking spaces fitted along the length where width allows.

- **New North of High laneway and adjacent car parking**

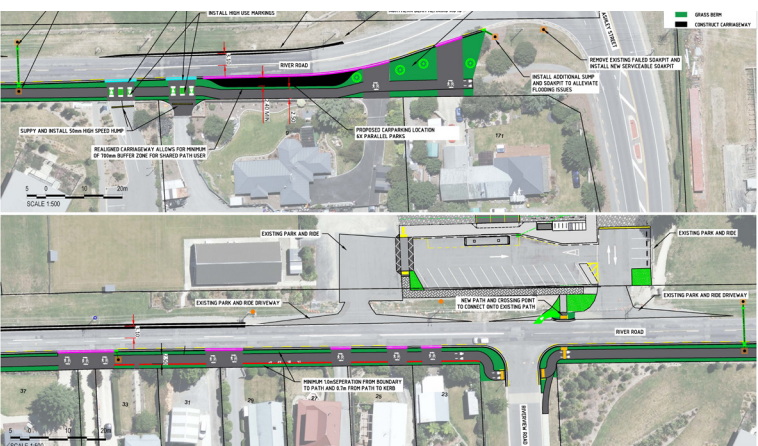
Over 60% of Waimakariri residents view Rangiora as their primary destination for shopping and services. People are placing a greater emphasis on town centre experiences, which means providing a mix of activities, well-designed public spaces, and an attractive environment are increasingly important. Hence, the Board supports the proposed development of the new laneway, which will create a pleasant pedestrian environment and provide a safe pedestrian connection to parking in the Rangiora Town Centre.

- **Skew Bridge replacement**

The Board considers this bridge dangerous, well past its use-by date, and needs replacing with a wide bridge that aligns Skewbridge Road on either side. The Board supports the Council's requests to Waka Kotahi to co-fund the replacement of this bridge, which can be built while the existing bridge remains open, ensuring minimal disruption to the public.

- **Multi-use cycleways/walkways**

The Board shares the Council's commitment to improving multi-modal transport options throughout the District. The intention is to provide safe and accessible facilities that encourage community participation. The Rangiora-Ashley Community Board, therefore, supported the development of the Council's Walking and Cycling Network Plan.



Proposed River Road upgrade



Rangiora Woodend Path



The Board believes walking positively impacts people's mental and physical health and alertness. However, multi-use paths are badly lacking in the rural areas of the District. Therefore, the Board will actively advocate for the development of multi-use paths in new subdivisions in rural areas and near rural schools. Allowing children to walk or cycle to school helps promote their independence and opens up their community for them to access. Although many urban school children have the option to walk to school, rural school children do not due to the lack of safe walkways and/or cycleways. The Board believes that it is essential that children grow up knowing that there are alternatives to just using cars.



Recycling

### Recycling

The Board supports all interventions to reduce household, business, and school waste. Not only are the costs of collecting materials for landfills saved when material is recycled, but also the costs associated with landfills in the long run. Recycling extends the life of current landfills and will save the Council the cost of land acquisition and setup of new landfills. The Board, therefore, supports the Council's programme of quality assurance audits of kerbside recycling bins by EcoEducate.

The Board also supports the upgrade of Southbrook Resource Recovery Park and the Council's ongoing Recycling Educational Programme and other recycling initiatives.



Rangiora Airfield

### Rangiora Airfield upgrades

The Board supports the upgrades to the airfield, especially given that most of the work is required for compliance and safety reasons. In addition, this facility is essential to the town of Rangiora and the District. By encouraging the use of the airfield, the town will benefit economically and promote the area, enabling further commercial activity both in the town and at the airfield itself, providing employment opportunities for local people.

### Supporting local business

The Board will continue to support activities fostering business and employment activities in our Ward and wider Districts, including initiatives by promotion groups such as Enterprise North Canterbury and Rangiora Promotions. The Board is concerned, however, about the lack of funding for promotions in the current economic climate and will continue to advocate to the Council for sustainable economic development.



High Street, Rangiora

## Safer communities

The Board is aware that increased growth also brings increased challenges that our local communities and businesses face, such as increased crime. The Board, therefore, believe that there should be a New Zealand Police presence in the Rangiora Town Centre.

The Board also supports local organisations committed to improving safety, including the Rangiora Volunteer Fire Brigade, the St John Ambulance Services, Neighbourhood Support North Canterbury, and Rangiora Community Patrol. Any crimes should be reported to the police.

## Food security

Food is an essential part of our daily lives and integral to New Zealand society. Having reliable access to affordable, nutritious, and safe food is fundamental to the health and wellbeing of the community. Evidence suggests that increasing the local availability of food, especially fruit and vegetables, is a vital strategy to improve healthy eating and avoid chronic disease. Support for a local food source can also assist in building a more sustainable local economy and social support networks.

Urban food security is an increasingly urgent priority in the face of climate change, rising food prices and growing urban populations. The Community Board, therefore, supports community-driven initiatives to improve access to food, such as community gardens, food forests, farmers markets and garden-to-table school programmes.



Organisations improving safety

## Board submissions

The Board presented detailed submissions on the Environment Canterbury and the Council's Long Term, Annual and Proposed District Plans.

## Discretionary grants

The Board will continue to support a wide range of local community groups through the Board's discretionary funding grants.

## Youth development grant

The Board believes that Waimakariri's future should be guided by those who will inherit it. Our youth should have a significant voice in the decisions we make today that will impact their future. Therefore, the Board will continue to support the Waimakariri Youth Council and the Youth Development Grant, which is aimed at young people aged between 12 and 24 living in the District.



Food security

## Rangiora-Ashley Community Board members

Member and contact details	Other responsibilities
 <p><b>Jim Gerard, QSO</b> Chair</p> <p><b>Mobile:</b> 027 726 8555 <b>Email:</b> jim.gerard@wmk.govt.nz</p>	<ul style="list-style-type: none"> <li>• Southbrook Reference Group</li> <li>• Southbrook Road Improvements Working Group</li> <li>• Southbrook School Travel Plan Working Group</li> <li>• Youth Development Grant Committee</li> <li>• District Licensing Commissioner</li> </ul>
 <p><b>Kirstyn Barnett</b> Deputy Chair</p> <p><b>Mobile:</b> 021 312 230 <b>Email:</b> kirstyn.barnett@wmk.govt.nz</p>	<ul style="list-style-type: none"> <li>• Cust Community Centre Advisory Group</li> <li>• Cust Domain Advisory Group</li> </ul>
 <p><b>Ivan Campbell</b></p> <p><b>Mobile:</b> 027 451 2727 <b>Email:</b> ivan.campbell@wmk.govt.nz</p>	<ul style="list-style-type: none"> <li>• Loburn Domain Advisory Group</li> <li>• Water Races Advisory Group</li> </ul>
 <p><b>Murray Clarke JP</b></p> <p><b>Mobile:</b> 027 513 7678 <b>Email:</b> murray.clarke@wmk.govt.nz</p>	<ul style="list-style-type: none"> <li>• GreyPower North Canterbury</li> <li>• Friends of the Rangiora Town Hall</li> </ul>
 <p><b>Monique Fleming</b></p> <p><b>Mobile:</b> 027 716 9380 <b>Email:</b> monique.fleming@wmk.govt.nz</p>	<ul style="list-style-type: none"> <li>• Waimakariri Access Group</li> <li>• Keep Rangiora Beautiful</li> </ul>
 <p><b>Liz McClure</b></p> <p><b>Mobile:</b> 027 628 9984 <b>Email:</b> liz.mcClure@wmk.govt.nz</p>	<ul style="list-style-type: none"> <li>• Waimakariri Health Advisory Group</li> <li>• Southbrook School Travel Plan Working Group</li> <li>• Fernside Hall Advisory Group</li> </ul>

## Rangiora-Ashley Community Board members

Member and contact details	Other responsibilities
 <p><b>Bruce McLaren</b>  <b>Mobile:</b> 027 313 6563  <b>Email:</b> bruce.mclaren@wmk.govt.nz</p>	<ul style="list-style-type: none"> <li>• North Canterbury Neighbourhood Support</li> <li>• Rangiora and Districts Early Records Society</li> </ul>
 <p><b>Steve Wilkinson</b>  <b>Mobile:</b> 021 334 203  <b>Email:</b> steve.wilkinson@wmk.govt.nz</p>	<ul style="list-style-type: none"> <li>• Southbrook Sports Club</li> <li>• Central Rural Drainage Advisory Group</li> </ul>
 <p><b>Cr Robbie Brine</b>  <b>Mobile:</b> 021 027 74188  <b>Email:</b> robbie.brine@wmk.govt.nz</p>	<ul style="list-style-type: none"> <li>• Canterbury Waste Joint Committee</li> <li>• Canterbury Regional Landfill Joint Committee</li> <li>• Solid and Hazardous Waste Working Party</li> <li>• Southbrook Sports Club</li> </ul>
 <p><b>Cr Jason Goldsworthy</b>  <b>Mobile:</b> 027 232 2726  <b>Email:</b> jason.goldsworthy@wmk.govt.nz</p>	<ul style="list-style-type: none"> <li>• Rangiora Promotions Management Board</li> <li>• Waimakariri Youth Council</li> <li>• Waimakariri Age-Friendly Advisory Group.</li> <li>• Waimakariri Walking and Cycling Reference Group</li> <li>• Central Rural Drainage Advisory Group</li> </ul>
 <p><b>Cr Joan Ward</b>  <b>Mobile:</b> 021 221 7021  <b>Email:</b> joan.ward@wmk.govt.nz</p>	<ul style="list-style-type: none"> <li>• Southbrook Road Improvements Working Group</li> <li>• Southbrook Road Reference Group</li> <li>• Rangiora Airfield Advisory Group</li> <li>• North Canterbury Sport and Recreation Trust</li> <li>• Canterbury Museum Standing Committee</li> </ul>
 <p><b>Cr Paul Williams</b>  <b>Mobile:</b> 021 022 21364  <b>Email:</b> paul.williams@wmk.govt.nz</p>	<ul style="list-style-type: none"> <li>• District Licensing Commissioner</li> <li>• Property Portfolio Working Group</li> <li>• Rangiora Airfield Advisory Group</li> <li>• Hurunui District Council – Ashley Rural Water Scheme Management Committee</li> </ul>

# Rangiora-Ashley Community Board Discretionary Grant

**Each financial year (July to June), the Rangiora-Ashley Community Board is allocated funds to distribute, by application, to community-based organisations within their Ward area.**

For the 2023/24 financial year, the Rangiora-Ashley Community Board has \$18,069 available for grants to non-profit based organisations.

**Applications will only be accepted from non-profit community-based organisations, registered charities, or incorporated societies.**

- Grant funding is limited to projects within the Board area or primarily benefiting the residents of the Rangiora-Ashley Ward
- The application should clearly state the purpose for which the money will be used
- Grants are generally limited to \$1,000 in any financial year (July to June), but a group can apply twice a year, providing it is for different projects. The Board will consider granting more than \$1,000 in exceptional circumstances provided that detailed reasons for exceeding the present limit are provided
- The application should include relevant financial information to prove the organisation can deliver the project on any application if deemed necessary
- Where possible or feasible, applicants must declare other sources from which funding has been applied for, or granted from, for the project being applied to the Rangiora-Ashley Community Board, including information on applications to other Community Boards
- Organisations predominately funded by the Central Government must provide supporting evidence that the requested grant will not be spent on projects that should be financed by the Central Government
- Grant applications will be considered at each meeting by the Rangiora-Ashley Community Board
- An Accountability Form must be provided to the Council within 20 working days after the event, completion of the project or when the funds were spent outlining how the funds were applied
- Examples of what is not funded are available on the application documents
- In the event that funds are not spent on the project or activity applied for within 12 months of the date of the event/project, the recipient will be required to return the grant funding to the Council.

For example, the following grants have been made by the Rangiora-Ashley Community Board in the 2023/24 financial year:

Group	Project	Amount
North Canterbury Athletics Club	Towards the printing of an Information Booklet	\$495
North Canterbury Pony Club	Towards the cost of a new cross-country course	\$1,000
Coastguard North Canterbury	Towards the cost of purchasing a new swift water rescue vessel	\$439
The Hope Community Trust	Towards the cost of hosting a two-day cooking class	\$234
The Rangiora and Districts Early Records Society Inc	Towards the cost of replacing their computer	\$1,000
Big Brothers Big Sisters	Towards the cost of purchasing an office printer	\$1,000
North Canterbury Scouts Group	Towards the cost of attending the 23rd New Zealand Jamboree	\$500
North Canterbury Classics Leisure Marchers Inc	Towards registration fees to attend the National Leisure Marching event	\$400
Southbrook Cricket Club Inc	Towards purchasing three tablets	\$500
Waimakariri Access Group	Towards the costs of hosting an Inclusive Sports Event	\$500
Rachel's House Trust	Towards the costs of hosting a community music event	\$435
Waimak Touch Incorporated	Towards the cost of purchasing sports gear	\$1,000
Cust and Districts Historical Records Society Inc	Towards the cost of purchasing a teardrop flag and base	\$500
Tihiraki North Loburn School	Towards the cost of purchase of EPro8 equipment	\$910
North Canterbury Swim Club	Towards the cost of purchase of ribbons for their Annual Time event	\$795

## Application process

Application forms can be collected at any of the Council's Service Centres.

Alternatively, an application form can be printed, downloaded, or completed online from the Council's website at [www.waimakariri.govt.nz/council/funding-and-grants/board-grants-and-funding](http://www.waimakariri.govt.nz/council/funding-and-grants/board-grants-and-funding)

The completed application should be:

posted to:

Governance Team  
C/- Waimakariri District Council,  
Private Bag 1005 Rangiora 7440

or emailed to: [com.board@wmk.govt.nz](mailto:com.board@wmk.govt.nz)

or dropped into your local Council Service Centre.

## Process by Governance Team

Once the application has been received, the Governance Team will assess the application, write a report and present it to the following Community Board meeting for a decision.

The Governance Team will notify you following the meeting of the Board's decision.



North Canterbury Coastguard



Rachel's House



North Canterbury Pony Club

# Board's General Landscaping Budget

Each financial year (July to June), the Rangiora-Ashley Community Board is allocated a discretionary sum that the Board may allocate towards landscape projects which enhance and beautify the community. Community Boards often identify community landscaping enhancement projects for which this budget can be used. Equally, local community members often suggest minor landscaping improvements, such as additional seating, paving, signage, or something similar.

The 2023/24 General Landscaping Budget as of 1 July 2023 was \$26,190, and an unspent amount of \$5,501 was carried forward from the 2023/24 financial year, thereby bringing the total of the 2023/24 Landscape Budget to \$31,691. Note that budgets are estimated, and any underspending will be used to mitigate any overspending on other projects. The Board's current projects are highlighted below.

Group/Project	Status	Amount
Loburn Domain Memorial	In progress	\$53,850
Canterbury Street Reserve	In progress	\$14,000
Passchendaele Walkway benches and planting	In progress	\$3,100



Loburn Domain



Passchendaele Walkway



# Waimakariri Youth Development Grant

## Purpose of the grant

In 2018, the Waimakariri Community Boards' established the Waimakariri Youth Development Grant to support one or more young people seeking:

- To enhance young people's skills and strengths, especially self-worth, decision-making, good relationships, resilience, positive mental health, life skills, and leadership
- To provide opportunities for young people to connect positively with their community in meaningful, practical ways
- To help and benefit others.

## General overview

Available to young people in the Waimakariri District aged between 12 and 24 at the time of application.

An annual grant of up to \$4,000 is available for allocation to suitable applicants in any one year. The Youth Development Grant Committee may award more than one grant up to a combined maximum of \$4,000 in a financial year (1 July 2023 to 30 June 2024).

## Application process

Applications must be fully completed and supported by two references. For example, teachers, school principals, employers, faith leaders, youth workers or community group leaders. One reference may be permitted from a member of the applicant's wider family. The next round of applications will be opening in September 2024. Information will be available on the Council website at [waimakariri.govt.nz/community/funding-and-grants/youth-development-grant](http://waimakariri.govt.nz/community/funding-and-grants/youth-development-grant).

## Selection process

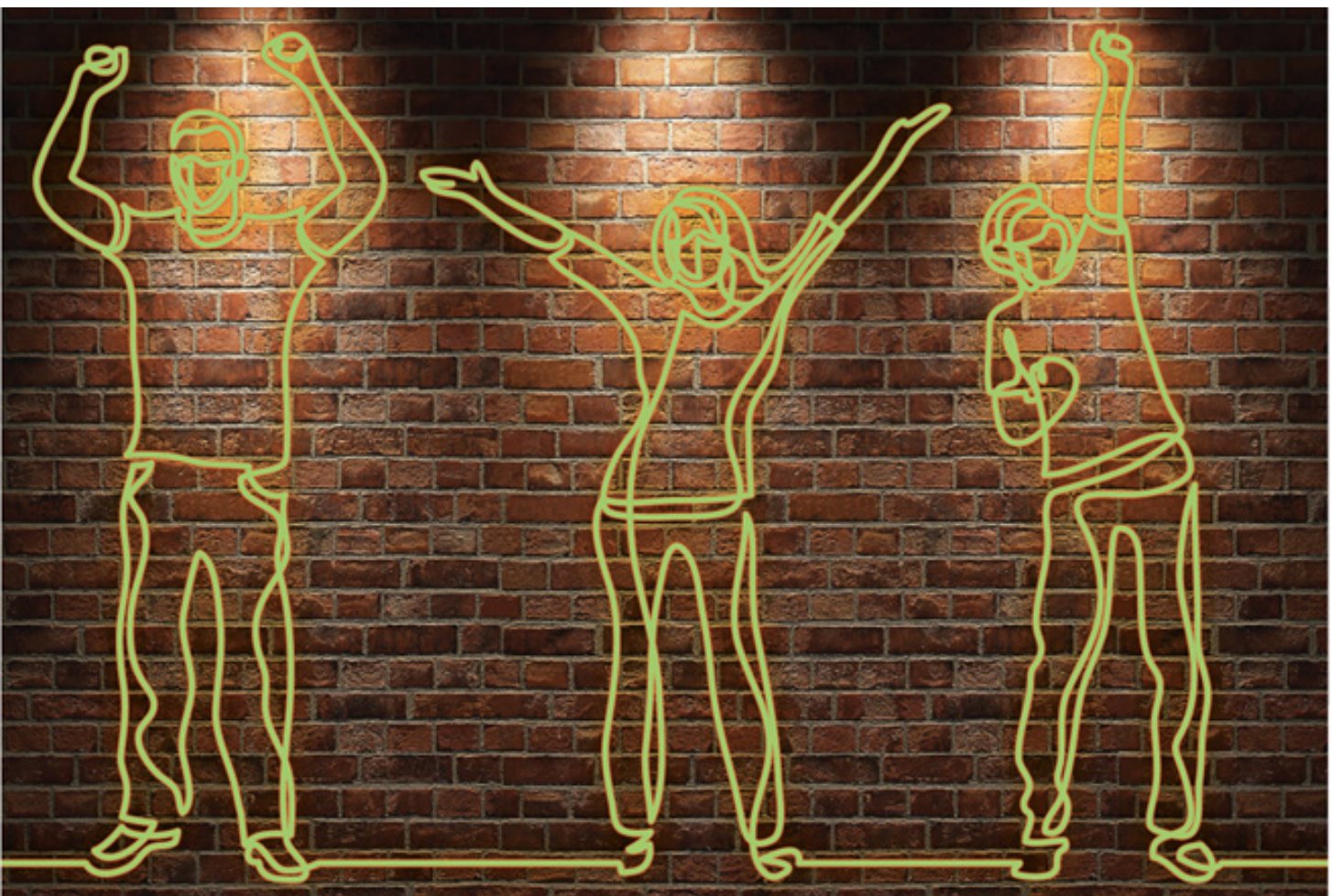
The Youth Development Grant Committee includes the four Community Board Chairpersons and an appointee of the Waimakariri Youth Council.

Short-listed applicants will be expected to present their application to the Committee in person, with their support person, and to answer any questions that the Committee may have. Applicants will be expected to provide an overview of their proposed project/activity to the Committee, and they may choose how to do this.

The Council staff will work with the successful applicant to formalise an agreement on how the grant will be paid to them. This is important as the Committee needs to be sure that the funding is spent on the project/activities the applicant has told them about and also to provide additional guidance to our youth.

Previous grants included:

Group	Project	Amount
Waimakariri Student Volunteer Army	Towards the costs of purchasing high visibility vests, work gloves, a first aid kit and spades to do volunteer work within the community.	\$1,733
J Reyello, L Price and E Stokes	Towards attending the 2020 24-7 YouthWork National Training held in Wellington.	\$2,000
Abby Fraser	Towards establishing a weekly Breakfast Club for young people attending Rangiora High School without breakfast.	\$4,000
Lee Pockson	Towards hosting Theatresport workshops for young people.	\$1,000
Ruby Wilson	Towards hosting two Leadership Breakfasts for young leaders in the Waimakariri District.	\$3,000



**Youth Development Grant Application**

# Where and When are Meetings Held?

Meetings are usually held on the second Wednesday of the month, in the Council Chamber, Rangiora Service Centre, 215 High Street, Rangiora, commencing at 7pm

The Rangiora–Ashley Community Board fully supports the many local community groups across our ward that do so much to ensure the needs and aspirations of our communities are met.

Members of the public, groups and organisations can bring matters to the attention of the Community Board by bringing a deputation to a Board meeting.

Deputations can be arranged by contacting the Governance Team and will be approved by the Chairperson.

Residents are also always welcome to contact Community Board members directly to discuss Council and community related matters.

## Agendas are available

At Council Service Centres and on the Council website two working days before a meeting:

[waimakariri.govt.nz/your-council/meetings/minutes-and-agendas](http://waimakariri.govt.nz/your-council/meetings/minutes-and-agendas)

## Governance Team contact details

Phone: 0800 965 468 (0800 WMK GOV)

Email: [com.board@wmk.govt.nz](mailto:com.board@wmk.govt.nz)

Post: 215 High Street, Private Bag 1005, Rangiora 7440

**Rangiora-Ashley Community Board meetings are open to the public and the following meetings have been scheduled for 2024:**

Wednesday, 14 February 2024

Wednesday, 13 March 2024

Wednesday, 10 April 2024

Wednesday, 8 May 2024

Wednesday, 12 June 2024

Wednesday, 10 July 2024

Wednesday, 14 August 2024

Wednesday, 11 September 2024

Wednesday, 9 October 2024

Wednesday, 13 November 2024

Wednesday, 11 December 2024

# Council Facilities and Contact Details



## Service Centres

[waimakiriri.govt.nz](http://waimakiriri.govt.nz)

### Rangiora Service Centre

215 High Street, Rangiora

**Phone:** 0800 965 468

**Fax:** 03 313 4432

**Email:** [office@wmk.govt.nz](mailto:office@wmk.govt.nz)

#### Opening hours

Monday to Friday: 8.30am-5pm

### Ruataniwha Kaiapoi Civic Centre

176 Williams Street, Kaiapoi

**Phone:** 03 375 5009

**Fax:** 03 327 8752

**Email:** [kaiapoi@wmk.govt.nz](mailto:kaiapoi@wmk.govt.nz)

#### Opening hours

Monday to Friday: 9am-5pm

### Oxford Service Centre

34 Main Street, Oxford

**Phone:** 03 311 9005

**Fax:** 03 312 4833

**Email:** [oxford@wmk.govt.nz](mailto:oxford@wmk.govt.nz)

#### Opening hours

Monday to Friday: 9am-5pm

Saturday: 10am-12 noon

(Limited services on Saturday)

## Community Centres

#### Online booking:

[waimakariri.govt.nz/leisure-and-recreation/facilities/halls-and-meeting-venues](http://waimakariri.govt.nz/leisure-and-recreation/facilities/halls-and-meeting-venues)

### Woodend Community Centre

6 School Road, Woodend.

### Pegasus Community Centre

Cnr Pegasus Main Street and Tahuna Street, Pegasus



## Libraries

[waimakaririlibraries.com](http://waimakaririlibraries.com)

### Rangiora Library

Trevor Inch Memorial Library

141 Percival Street, Rangiora

**Phone:** 03 311 8901

**Fax:** 03 313 4650

**Email:** [library@wmk.govt.nz](mailto:library@wmk.govt.nz)

#### Opening hours

Monday to Thursday: 9am-5pm

Friday: 9am-7pm

Saturday: 10am-2pm

Sunday: 1pm-4pm

### Kaiapoi Library

176 Williams Street, Kaiapoi

**Phone:** 03 375 5009

**Fax:** 03 327 8752

**Email:** [library@wmk.govt.nz](mailto:library@wmk.govt.nz)

#### Opening hours

Monday to Wednesday and Friday: 9am-5pm

Thursday: 9am-7pm

Saturday: 10am-2pm

Sunday: 1pm-4pm

### Oxford Library

34 Main Street, Oxford

**Phone:** 03 311 9006

**Fax:** 03 312 4833

**Email:** [library@wmk.govt.nz](mailto:library@wmk.govt.nz)

#### Opening hours

Monday to Friday: 9am-5pm

Saturday: 10am-12 noon

## Aquatic Centres

[waimakariri.govt.nz/aquatic-facility](http://waimakariri.govt.nz/aquatic-facility)

### Dudley Park Aquatic Centre

47 Church Street, Rangiora

**Phone:** 03 311 8905

#### Opening hours

Monday to Friday: 6am-9pm  
Saturday & Sunday: 7.30am-7pm  
Public Holidays: 10am-7pm  
Christmas Day: Closed

### Kaiapoi Aquatic Centre

9 Cass Street, Kaiapoi

**Phone:** 03 375 5041

#### Opening hours

Monday to Friday: 6am-3.30pm & 6pm-9pm  
Saturday & Sunday: 7.30am-7pm  
Public Holidays: 10am-7pm  
Christmas Day: Closed

### Oxford Community Aquatic Centre

9 Burnett Street, Oxford

**Phone:** 03 311 8921

#### Opening hours

Summer only from late November  
Monday to Friday: 8.30am-6.30pm  
Saturday & Sunday: 10am-7pm  
Public Holidays: 10am-7pm  
Christmas Day: Closed

## Transfer Stations

### Southbrook Resource Recovery Park

284 Flaxton Road, Rangiora

**Phone:** 03 313 5499

**Resale Store:** 03 313 5798

#### Opening hours

Monday to Sunday: 8.30am-4.30pm  
Public Holidays: Closed

### Oxford Transfer Station

46 High Street, Oxford

#### Opening hours

Friday: 12.30pm-4.30pm  
Sunday: 12 noon-4.30pm  
Public Holidays: Closed

## Snap Send Solve

You can report an issue instantly from your mobile if you spot something like a damaged footpath, litter or pothole.

Report an issue via  
[waimakariri.govt.nz/snapsendsolve.com](http://waimakariri.govt.nz/snapsendsolve.com)



The Council has a number of other facilities and venues which can be found on the websites as provided below:

#### Halls and Meeting Venues:

[waimakariri.govt.nz/leisure-and-recreation/facilities/halls-and-meeting-venues](http://waimakariri.govt.nz/leisure-and-recreation/facilities/halls-and-meeting-venues)

#### Sports Grounds:

[waimakariri.govt.nz/leisure-and-recreation/facilities/sports-grounds](http://waimakariri.govt.nz/leisure-and-recreation/facilities/sports-grounds)

If you are new to the District you

may like to visit our website which provides information on a number of Council services:

[waimakariri.govt.nz/community/new-to-the-District](http://waimakariri.govt.nz/community/new-to-the-District)

## Request a Service

The following service requests can be lodged online with the Council. The location of the request is required.

*Please contact Council directly on **0800 965 468** regarding urgent requests such as excessive noise, flooding or public toilet issues.*

### Online Service requests

- Cemeteries
- Dog complaints
- Drains
- Footpaths
- Litter/rubbish
- Parks
- Public water supplies
- Roads and streets
- Rubbish/recycling collections
- Sewer
- Signs
- Trees
- Vandalism/graffiti
- Water races

go to [waimakariri.govt.nz/services/online-services](http://waimakariri.govt.nz/services/online-services)



Cust Village



Ashley Hotel



Rangiora War Memorial



Ashley Historical Church



Canterbury Street Reserve



Cust Museum



215 High Street  
Private Bag 1005  
Rangiora 7440, New Zealand  
**Phone** 0800 965 468  
waimakariri.govt.nz

240126011103