



Kaiapoi-Tuahiwī Community Board Community Plan 2022–2025

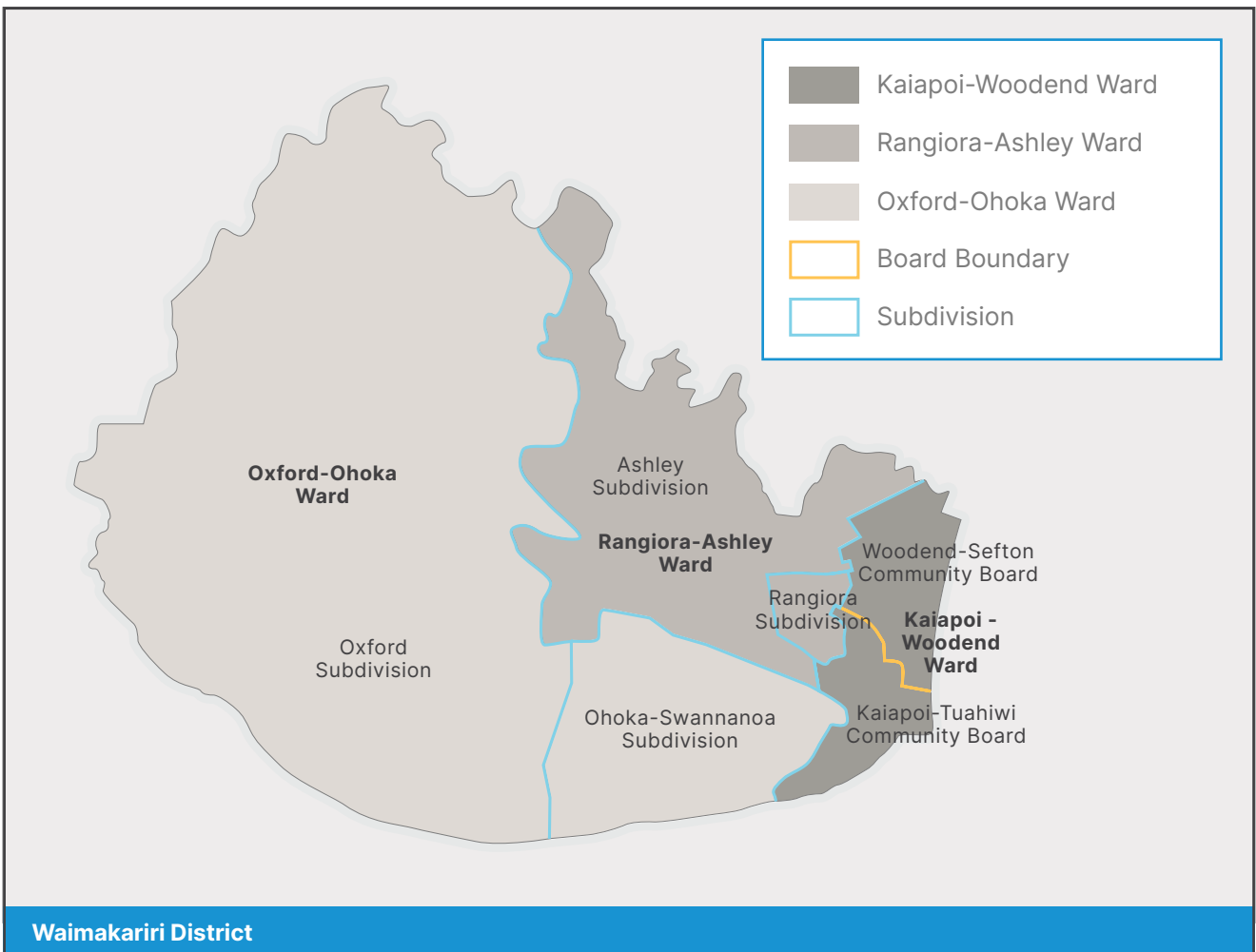




Ward	Population
Rangiora-Ashley Ward	28,126
Oxford-Ohoka Ward	14,465
Kaiapoi-Woodend Ward	29,482
Total	72,073

Kaiapoi-Woodend Ward	Population
Woodend-Sefton Community	11,890
Kaiapoi-Tuahiwi Community	17,592
Total	29,482

*Estimated resident population as at 30 June 2023



Chairperson's Message

Dear Residents

The Kaiapoi-Tuahiwi Community Board continued to work on projects and improvements to the district that increase visitors to the area and create a pleasant environment for residents.

The improvement of town entrances is progressing with new tree plantings at the southern entrance to be completed in autumn 2025. This will be complemented with a restoration of 46 Main North Road which will create a more welcoming entrance to the town on the old Main North Road.

Concern with the damage to plantings by large vehicles unable to navigate the undersized Charles Street roundabout is an ongoing issue, and signage to encourage trucks to take alternative routes has been installed. A change to the landscaping in terms of more durable hard materials instead of plantings is yet to be made.

Efforts to get Waka Kotahi to maintain the traffic islands that run throughout the town from the motorway have not been successful however with the fast tracking of Woodend Bypass there may be an opportunity for this to be rectified. Negotiations continue.

The groups to make their home at the community hub on Courtenay Drive were finalised and combined with the work carried out by the collaboration between community board and TKOT planting of Huria Park, the area is being enhanced, providing more opportunities for public use including recreation areas, walks and cycleways.

Support to the community through the distribution of grants saw a wide range of applications from community groups allowing them to function more effectively.

Although the Board mostly supports the requests that occur from deputations and presentations to the Board, one that was ruled against was the fencing of the Moorcroft Reserve for Kaiapoi North School. The reserve remains a reserve for public use.

The motorhome park continues to attract large numbers of tourists, which brings more money into the town, helping local businesses. A new dump station resulting from that growth has been approved.

A five year lease to the Kaipuke Kaiapoi Heritage Trust was approved. The restoration of this historic ship provides another nautical attraction on the riverbank.

The state of the water in the Kaiapoi River is an important matter and the Board gained results of an investigation by scientist Adrian Meredith who asserts it is a result of saline intrusion. Responses to this information have yet to be made.

Opportunities for the development of boat access to the river have been offered by private concerns which the Board supports.

The Kaiapoi Art Expo, an event that brings many visitors to Kaiapoi each year, donated funds for a Raymond Herber sculpture to be installed along the Silverstream riverbank adding to the number of sculptures located along walkways and cycleways for the enjoyment of all.

The generous gift by a deceased member of the Kaiapoi community to be used in a seven kilometre radius of the Charles Street roundabout was gratefully received from Harry Harper and planning has started on a revamp of the town's bridge across the Kaiapoi river. This will be a significant improvement on the town centre aesthetics and the Board is extremely grateful for the opportunity to add to the vibrancy of the town centre.

Thanks must go to Board members for their continued work in supporting their community. Board members are always open to any ideas or suggestions that residents may have about improvements to their town and district and welcome any communication.

Kind regards

Jackie Watson

Chairperson

Kaipoi-Tuahiwi Community Board



About the Kaiapoi-Tuahiw Community Board

The Waimakariri District is divided into three wards with the Kaiapoi-Tuahiw Community Board representing the southern end of the Kaiapoi-Woodend ward, including the communities of Kaiapoi, Clarkville, Tuahiw and the Pines and Kairaki Beaches.

The Kaiapoi-Tuahiw community area has a great mix of properties and people, ranging from urban settlements to lifestyle blocks to beaches in the east. The population of the Board's community area is estimated to be 15,650.

The focus of economic activities within the community area is: residential accommodation, commercial businesses, light industry and tourism.

What is a Community Board?

The Local Government Act (2002), states that the role of a Community Board is to represent and advocate for the interests of its community. The Waimakariri District is currently divided into three wards, and the Kaiapoi-Tuahiw Community Board provides feedback, leadership and support to residents within the southern part of the Kaiapoi Woodend Ward.

The Kaiapoi-Tuahiw Community Board is comprised of five elected members, plus two appointed Councillors of the Waimakariri District Council, giving a total of seven members. The Board has invited the other two Ward Councillors to participate in Board discussions but they do not have voting rights.

The Community Board is not the Council nor is it a committee of the Council. The Board works collectively with the Council to achieve community goals. The Board is also responsible for any areas delegated to it by the Council.

How does the Community Board do this?

- Taking an overview of the Council's services and projects affecting the area including water supply, sewerage, stormwater drainage, parks, recreational facilities, community activities and roading and traffic management projects
- Engaging with residents, community organisations and groups in developing local solutions and keeping you informed by using a variety of means, and being visible and accessible

- By encouraging community participation in local Board and Council decision-making
- Advocating to the Council on key issues and priorities for the community area, especially through the Annual and Long Term Plan processes
- Providing grants to community groups and organisations
- Working collaboratively with other Community Boards to promote an understanding for the work being done in the District as a whole
- Maintaining positive working relationships with key Council staff and management
- Actively participating in Council business, including the annual budget to ensure equitable spending across the District while being mindful of rates affordability.

If you are a resident or part of a local community group who wishes to raise any concerns or issues, please do not hesitate to contact a member of the Board for advice and help.

**For contact details
see pages 10–11**

**or visit: [waimakariri.govt.nz/
your-council/ council-boards-
and-committees/kaiapoi-
tuahiw-community-board](https://www.waimakariri.govt.nz/your-council/council-boards-and-committees/kaiapoi-tuahiw-community-board)**

Performance Expectations 2022–2025

The Kaiapoi-Tuahiwi Community Board aims to meet the needs of our diverse community through:

- Engaging with individuals, groups, other Boards, and the Council to provide the best outcome for the Kaiapoi-Tuahiwi community and the District as a whole
- Engaging and interacting with younger generations by seeking their views and feedback on important issues in the ward
- Engage with local schools, the Youth Council, community and advisory groups and offer encouragement for their projects and provide assistance where practical
- Developing closer links and relationships with key settlements and groups in the Kaiapoi-Tuahiwi Ward, as well as with significant District-wide organisations
- Developing strategies for the Board to become an effective, cohesive voice in representing the community viewpoint at meetings and policy hearings
- Developing and promoting the Community Board as a vehicle for local residents to seek assistance and advocacy in accessing Council services and consultation processes
- Maintaining positive working relationships with key Council staff and management
- Actively participating in Council business and the annual budget process to ensure equitable spending across the District whilst being mindful of rates affordability
- Support the Council's Local Economic Development Strategy to encourage business growth across the community area
- Continue to advocate for the protection and enhancement of waterways and wetlands for recreational purposes
- Advocating for balanced growth that enhances and protects the character of the communities' recreational, opportunities, liveability and employment
- Working closely with each community to identify and encourage attractive streetscapes which enhance the visual profile of that community
- Advocate for community concerns regarding safer roads and cycleways
- Lobbying for improved infrastructure for modern technology i.e. recharging stations, better Internet, etc.



'Wind Swept Tree' by Raymond Herber in Silverstream Terrace Reserve

What's happening now and looking forward?

There are a number of projects underway in the Kaiapoi-Tuahiwi Community area, this section outlines those projects.

Reserves

Huria Reserve

The Huria Reserve – Heritage and Mahinga Kai Development covers nearly eight hectares of land within the Huria Reserve in Kaiapoi. The reserve recognizes the significant cultural values for Te Ngāi Tūāhuriri Rūnanga. Mahinga Kai describes the food and natural resources that mana whenua gather in their takiwā (area), and the practices they use. The area will provide for social and cultural activities, include walking historic trails, native forest planting and a cultural and education centre. Pathways have been established and recently an entry way has been established. Numerous planting days have resulted in establishing the start of the required plants, the beginnings of the environmental and biodiversity ecosystems.



Huria Reserve Entrance

Silverstream Reserve

This reserve is located in a rural setting near the settlement of Clarkville. It is a 52 hectare reserve spanning two sites and has been replanted with more than 50,000 native plants by enthusiastic volunteers. The east end site is 28 hectares in size and contains a mixture of wetland and dry land plants and is the home of the rare Gratiola



Silverstream Reserve

Sextendata wetland plant and Muehlenbeckia Axillaris which is host to the native Boulder Copper butterfly.

The west end site is 23 hectares and hosts a more mature mixture of wetland and dryland plants with majority of plantings being wetland plants that follow the stream. The reserve is known for fishing and is significant to local Maori for Mahinga Kai.

Two new Kaiapoi reserves

Two new greenspace conservation and recreation projects board members are keen to advance this year are the new Courtenay Stream Wetland Reserve and the Ohoka Stream Loop Trail.

Both already have funding through the Arohata te awa project which aims to create recreational off-road ecological corridors along Waimakariri's rivers and streams at the same time helping to improve stream and river water quality and the native biodiversity of the area.

The Courtenay Stream Wetland is a Council-owned four-hectare block along the Courtenay Stream at the south entrance to Kaiapoi opposite the Hellers factory.

A wetland restoration plan is being prepared for the reserve using the nearby Poynter Wetland along the Waimakariri River for ecosystem reference. The full reserve plan includes a walking trail, small carpark and as well as the wetland restoration. The first plantings are planned for May to September this year.

With its Main North Road frontage this reserve is sure to become a prime site for recreation and a template for wetland restoration.

The Ohoka Stream Loop Trail is on the west side of the Silverstream subdivision across the Ohoka Road arterial.

It follows the western side of the arterial to the Ohoka Stream, along the stream to loop back to a small carpark to be created near Butchers Road corner. The trail, which varies from 10m to 20m wide along the stream is about two kilometres long.

A one-hectare former Department of Conservation block at the Mill Road corner will be incorporated into the loop trail and ideas for this include creation of native butterfly habitat plantings.

Playground replacements

Currie Park/Norman Kirk playgrounds.

The eastern Kaiapoi community is currently serviced by two neighbourhood parks which include playgrounds: Currie Park and Grey Crescent Reserve. Norman Kirk Park, the Food Forest and wider Regeneration Area are also within proximity.

The playground equipment at Currie Park is currently at a point of renewal and previous engagement with the community around this reserve indicated that the play space here was underutilised.



Norman Kirk Park Location Plan



Currie Park Play Space Concept Plan

Consultation was carried out with residents regarding the development of a new play space at Norman Kirk Park instead of renewing the play space at Currie Park. Feedback from the surrounding community indicated that residents were mostly supportive of this.

The play space at Norman Kirk Park was intended to serve the surrounding neighbourhood and provide for family members of those using the sports fields.

The Concept Plan included a fort structure with slides and climbing elements, a three bay swing set, a carousel/spinner and a rocker.

The Currie Park Concept Plan was based on providing a play space with natural and sensory play. The play space would offer opportunities for exploring and finding, with a bug trail, timber stepping posts, walking logs, rock boulders, varied plantings. The play space would utilise the bark mulch area that the existing playground equipment would be removed from, which is still of good quality.

Community Hub Playground (NCF Park)

Waimakariri District Council Playground Strategy has identified the adjacent NCF playground as due for renewal. The playground equipment at NCF is also at the end of its useful life and needs to be decommissioned. Relocation of the NCF Playground was approved in October 2021.

Adjacent to NCF Park is the Kaiapoi Community Hub. This was proposed in The Kaiapoi Reserves Master Plan and consulted on through the 2020/2021 Annual Plan as a response to the Canterbury earthquakes. The Board approved public consultation with stakeholders and the

wider community of the concept plan presented at its November 2024 meeting. The final plan, after feedback has been received is expected to be presented for sign-off in early 2025.

The Pines playground

Recently the Pines playground was relocated due to flooding of the old site. This project has been completed and the Board has received positive feedback from residents on the new placement.

Town entrances

The Board had been working with Greenspace staff to redesign the entrances into Kaiapoi with workshops held deciding in 2023 to focus on upgrading the southern entrance on Main North Road.

The Board recently signed off on the replacement of the Welcome to Kaiapoi sign at this entrance and authorised the planting of more trees to create an avenue effect. This work will be carried out during the first part of 2025. The other entrances will be upgraded in the following years as funding becomes available.

Kaiapoi and Cam River Rehabilitation

A report on the ecological dieback of the Kaiapoi and Cam Ruataniwha Rivers was presented at the Board's October 2024 meeting and the Board's concerns and request for further monitoring resulted in the report being presented to the Council in November 2024 and a letter written to the Chief Executive of Environment Canterbury.

A joint meeting of Environment Canterbury and Waimakariri District Council's elected members resulted in a request for a report on past governance/management of the Kaiapoi and Cam Ruataniwha Rivers and should include a proposal for a future management structure. Work on the review of a management structure will be carried out in 2025.

Charles Street Roundabout

The Board held a workshop with Roding staff to raise their concerns regarding the Charles Street Roundabout and the lack of manoeuvrability for large trucks and buses, noting that business frontages had been damaged and the plantings destroyed by vehicles trying to access Williams Street. The Board requested that consideration be given to installing signage to dissuade large trucks and motorhomes from using the Charles Street roundabout and encouraging them to utilise the roundabout in Smith Street instead. Signage has been installed recently and the intersections will be monitored to ensure that these measures have been effective.

Kaiapoi Community Hub

The Kaiapoi Hub project is making progress, with services and civil work now completed. The Kaiapoi Croquet Club has built its maintenance shed and is in the process of completing their own two lawns as have been successful in obtaining funding for this. The Council is still working on lawns one and two which are expected to be handed to the club in early 2025.

Staff are currently working with YDOT, Menz Shed, and Satisfy Food Rescue on their building designs. Although the overall construction costs and securing funding remain significant challenges for all groups, staff are actively providing support. This includes offering advice on consent and building requirements, as well as guidance on funding options.

Advocating on behalf of the Community

- **Waimakariri District Plan Review** — The Board made a submission during the recent public consultation on the District Plan Review and will continue to support, contribute to and monitor the progress of the Plan.
- **Submissions – Annual Plan** — The Board will continue to work with the Council and submit on draft Annual Plans and the draft Long Term Plan (LTP).
- The Board submitted on the key issues outlined in the consultation documents on both Environment Canterbury and the Council's Draft Long Term Plan 2024–2034. The Board also successfully submitted on Plan Change 31 ensuring the community's viewpoints were presented during the hearing.
- **Discretionary Grants** — Continued to support a wide range of local community groups through the Board's discretionary funding grants.
- **Youth Development Grant** — Continued to support Waimakariri Youth Development Grant which is aimed at young people, aged between 12 and 24 years, living in the District.
- **Northern Pegasus Bay Bylaw Review** — The Board made a submission on the review of this bylaw during 2024.

Upcoming projects

Williams Street Bridge Upgrade

The iconic bridge on Williams Street in Kaiapoi is set for an upgrade.

Council staff have been investigating options to replace the balustrade after an engineering assessment found the barriers were no longer fit for purpose.

Given the significant investment required to complete the bridge upgrade, the Council had budgeted for the work to be undertaken in 2027/28 as part of the 2024–34 Long Term Plan. However, a generous bequeath from Mr Harry Harper has made the project possible now.

The Harper Family have agreed to the bequeathed funds being put towards the restoration and upgrade of the bridge. The upgrade will include an architectural laser cut stainless steel handrail and infill panels, incorporating cut out design motifs. The stainless-steel infill panels require little maintenance and are stronger, giving more flexibility for panel design. This will also see the existing concrete pillars and lamp posts retained and refurbished.

Council staff will be working closely with the Kaiapoi-Tuahiwi Community Board, Waimakariri Public Arts Trust and project Community Advisory Group to develop a design for the panels that will showcase the unique history and narrative of Kaiapoi. A design brief for the stainless-steel panels will now be prepared by the Advisory Group for the Public Arts Trust, with the final sign-off being made by the Kaiapoi-Tuahiwi Community Board.

Kaipuke Kaiapoi Heritage Trust

Following approval from the Board to temporarily store the historic scow 'Success' at the Corcoran Reserve at 73 Charles Street, the vessel is now in place and the Trust hopes to begin restoration once funding has been sourced.

The Trust anticipates that work the scow will be able to be floated within five years although full restoration may take longer. There are plans that other vessels may also be renovated in the future.

Relocation of Historic Kaiapoi Railway Station

Recently the historic Railway station was relocated to enable Paris for the Weekend café to utilise the view of the river and create an outside seating area. This has proved popular during the summer months. Recently the Board met with the owners of the building to negotiate a lease which would be advantageous to both parties.

Since the relocation, business has increased and Paris for the Weekend attracts visitors to the town and residents alike.

Car and boat trailer parking

The Board has recently delayed work on this initiative in favour of revamping, in partnership with the New Zealand Motor Caravan Association, the Charles Street Caravan dump station.

The Board recently signed off on the proposed design and the project is scheduled to be completed by June 2025.

Kaiapoi Food Forest

Over the past five years, the Kaiapoi Food Forest has grown in use significantly with visits from preschools, schools, and other groups. The Kaiapoi Food Forest Trust would like an education facility in the Food Forest to help teach people to grow food sustainably.

The demand for these programs is growing and the Trust wish to install a permanent toilet and shelter to support these activities.

The shelter and toilets will be predominantly used for education programs and events.



The Scow 'Success' in Progress

This will be a self-funded initiative with no cost to the Council.

Construction of an education shelter including a toilet at the Kaiapoi Food Forest was approved by the Kaiapoi Tuahiwi Community Board in December 2023 and by Council in February 2024. Construction is scheduled to begin shortly.

Murphy Park and Rowing Precinct

The Board has considered several ways to advance this project. However, due to costs the project has been stalled for some time.

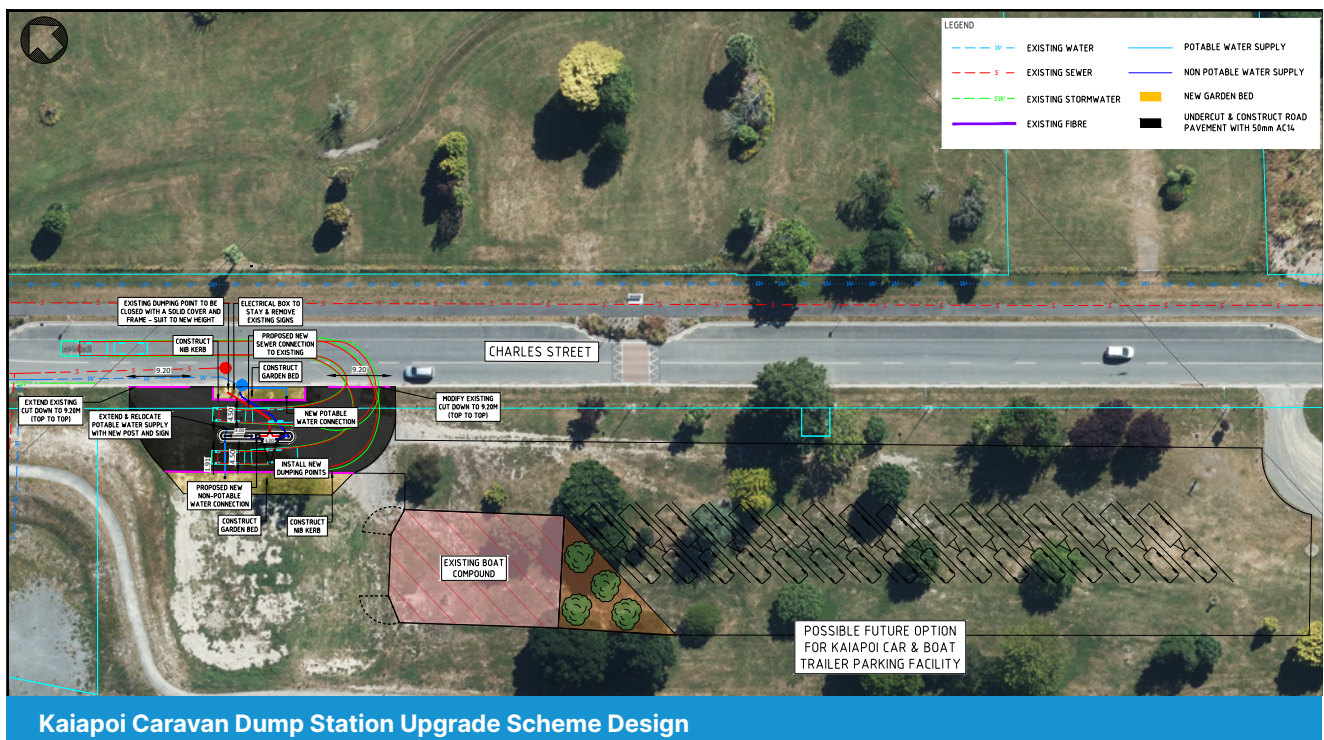
However, as a result of a recent deputation of parents from St Margaret's College there is a positive indication that this long-awaited project may be able to be concluded. The parents of St Margaret's College rowing team have raised health and safety concerns and the difficulties that face rowers accessing the river. As a result, parents have donated funds to top up the current budget to achieve a new pontoon which will allow not only College rowers to access the river but other rowers and kayakers which use the current slipway.

A design and costings are being carried out with the expectation that this project will be completed by spring 2027.

Projects supported by the Board

- ENC way find signage - It was brought to the attention of ENC that walkers and cyclists were getting lost when using the trails in the district. To combat this ENC has been working on installing way finding signage on walking and cycle tracks within the district. This is an ongoing project as more cycleways and walkways are progressed.
- Waimakariri Public Arts Sculpture trail — The Waimakariri Public Arts Trust installed a Raymond Herber sculpture on the banks of Silverstream during the year (see page 3), continuing their work in providing more artworks in the district.

- A sculpture trail is to be released early 2025 which will be an attraction for art lovers and tourists to further investigate the historic and artistic aspects to be found in Waimakariri. Kaiapoi will be a strong feature as it has the highest number of artworks in the district.
- Art on the Quay — Art on the Quay is located in the Ruataniwha Kaiapoi Service Centre which also houses the Council service desk, Kaiapoi Library and Kaiapoi Museum. Art on the Quay operates under the Waimakariri Community Arts Council and is managed by Jackie Watson and a team of helpers, all volunteers.
- Recently celebrating their 10 years as an art gallery with a special exhibition opened by Mayor Dan Gordon, the gallery has held 97 exhibitions of predominately local artists, making a solid contribution to the vibrancy and well being of the town and its community.
- Repair of the Courtenay Stream — Environment Canterbury came to speak to the Board at the end of 2024 to inform them they will be carrying out works on Courtenay Stream flood gates which are in bad repair after the earthquakes. This work is supported by the Board and it is hoped that work will start in 2025.



Community Engagement

Supporting Community Groups

The Board will continue to support and advocate for community groups within the Board's area.

Through the use of its discretionary funds the Board will continue to support a wide range of local community groups and events.


The Board is also interested in hearing from its residents and has had several groups or individuals who came to speak (Deputations) to the Board during the previous year on numerous subjects.

Group / Individuals	Subject	Outcome
Dr Martinez	Blue Zone living	For information
Councillor MacKay	Environment Canterbury's Long Term Plan	Board developed a submission on behalf of its residents.
M Korhonen	Building Communities	Board suggested that M Korhonen work with the Community Team and Libraries to promote this initiative.
J Miles and G Thompson	Fencing Moorcroft Reserve	Requested staff to consult with the public and report back to the Board so a decision could be made.
L Griffiths and C Dowdell (Environment Canterbury)	Possible closure of Hays Road	Board encouraged ECan to work with the roading team and consult with the public
Fred Brooks (ECan)	Courtney Floodgate Repairs	For information
A Fechney	Youth Development Opportunities Trust	Promoted Fun Day and received funding
N Atkinson	Alwin G Heritage Trust	Update on progress on the scow repair and lease to occupy
K Adams	Kaiapoi Community Gardens	Update on this initiative and received funding
W Blakely, T Keys and F Moore	Water access for rowers at Murphy Park	Working with the Council to progress this and offered support funding
D Kingi-Patterson	Doll and Bear Show	For information

Kaiapoi-Tuahiwi Community Board members

Member and contact details	Responsibility and representation on outside organisations
 <p>Jackie Watson Chairperson Mobile: 022 350 9547 Email: jackie.watson@wmk.govt.nz</p>	<ul style="list-style-type: none"> • Waimakariri Arts Trust • Waimakariri Public Arts Trust • Pines-Kairaki Beach Association • Northern Pegasus Bay Advisory Group
 <p>Sandra Stewart Deputy Chairperson Mobile: 027 668 8583 Email: sandra.stewart@wmk.govt.nz</p>	<ul style="list-style-type: none"> • GreyPower North Canterbury • Kaiapoi Promotion Association • Heritage and Mahinga Kai Joint Working Group • Silverstream Reserve Advisory Group
 <p>Tim Bartle Mobile: 021 477 449 Email: tim.bartle@wmk.govt.nz</p>	<ul style="list-style-type: none"> • North Canterbury Neighbourhood Support • Waimakariri Health Advisory Group • Clarkville Rural Drainage Advisory Group • Central Rural Drainage Advisory Group • Coastal Rural Drainage Advisory Group
 <p>Tracey Blair Mobile: 027 685 8667 Email: tracey.blair@wmk.govt.nz</p>	<ul style="list-style-type: none"> • Waimakariri Access Group • Darnley Club
 <p>Russell Keetley Mobile: 0210 894 9646 Email: russell.keetley@wmk.govt.nz</p>	<ul style="list-style-type: none"> • Kaiapoi and Districts Historical Society • Kaiapoi Landmarks Team
 <p>Cr Neville Atkinson JP Mobile: 021 558 037 Email: neville.atkinson@wmk.govt.nz</p>	<ul style="list-style-type: none"> • Deputy Mayor • Waimakariri Passchendaele Advisory Group • Kaiapoi Marine Precinct Bookings Advisory Group • Northern Bulldogs

Kaiapoi-Tuahiwi Community Board members

Member and contact details	Responsibility and representation on outside organisations
 <p>Cr Al Blackie JP QSM Mobile: 027 327 6761 Email: al.blackie@wmk.govt.nz</p>	<ul style="list-style-type: none"> • Creative Communities NZ Assessment Committee • Waimakariri Community Arts Council • Waimakariri Art Collection Trust • Kaiapoi Marine Precinct Bookings Advisory Group • Northern Pegasus Bay Advisory Group • Clarkville Rural Drainage Advisory Group • Coastal Rural Drainage Advisory Group

Other Kaiapoi-Woodend Ward Councillors

The Kaiapoi-Woodend Ward has a total of four Councillors elected to represent it on the Council. Two Councillors, N Atkinson and A Blackie, have been appointed by the Council to the Kaiapoi-Tuahiwi Community Board. Councillors B Cairns and P Redmond have been appointed to the Woodend-Sefton Community Board.

The Kaiapoi-Tuahiwi Community Board has chosen to have all four Councillors sitting at the Board table to contribute to debate and discussion. However, only Councillors Atkinson and Blackie (as the appointed Councillors) have voting rights at the Kaiapoi-Tuahiwi Community Board.

Member and contact details	Responsibility and representation on outside organisations
 <p>Brent Cairns Mobile: 027 222 4767 Email: brent.cairns@wmk.govt.nz</p>	<ul style="list-style-type: none"> • Waimakariri Access Group • North Canterbury Museums' Group • Kaiapoi Promotion Association
 <p>Cr Philip Redmond QSM Mobile: 027 439 5515 Email: philip.redmond@wmk.govt.nz</p>	<ul style="list-style-type: none"> • Southbrook Road Improvements Working Group • Southbrook Road Reference Group • Southbrook School Travel Plan Working Group • Waimakariri Health Advisory Group • Walking and Cycling Reference Group • Ashley River Rating Committee

Kaiapoi-Tuahiwi Community Board Discretionary Grant

Each financial year (July to June) the Kaiapoi-Tuahiwi Community Board is allocated funds to distribute, by application, to community-based organisations within their community area.

For the 2024/25 financial year (July–June) the Kaiapoi-Tuahiwi Community Board has \$8,600 available for grants to non-profit community based organisations.

Applications will only be accepted from non-profit community-based organisations, registered charities or incorporated societies.

- The group should have strong links with the community area of Kaiapoi-Tuahiwi
- Grant funding is limited to projects within the Board area or primarily benefiting the residents of the Kaiapoi-Tuahiwi area
- The applicants should clearly state the purpose for which the money is to be used
- Money should primarily be used for capital or improvement works, for enhancement of the group, or towards the purposes of the group, including events involving community participation
- The applicant should submit a balance sheet which shows their current financial assets and liabilities. Applications cannot be processed until financial information is received
- Where possible or feasible applicants must declare other sources from which funding has been applied for, or granted from, for the project being applied to the Kaiapoi-Tuahiwi Community Board
- Organisations that are predominately funded by Central Government must provide supporting evidence that the requested grant will not be spent on projects that should be funded by Central Government
- Grant applications will be considered at each meeting by the Kaiapoi-Tuahiwi Community Board

- Generally funding grants will be a maximum of \$750 in any one financial year (July to June), but the group can apply up to twice in that year, providing it is for different projects
- Examples of what is not funded are available on the application documents. Debt and wages are not funded.

Application process

Application forms can be picked up at any of the Council's Service Centres. Alternatively an application form can be printed, downloaded or completed online from the Council's website: www.waimakariri.govt.nz/council/funding-and-grants/board-grants-and-funding

The completed application should be posted to:

Governance Team

C/- Waimakariri District Council,
Private Bag 1005, Rangiora 7440

Or emailed to: com.board@wmk.govt.nz

Or dropped in to your local Council service centre (see back page for details).



Waitangi Day Celebration — All Together Kaiapoi

Kaiapoi-Tuahiwi Community Board Grants 2024–25

Date	Group	Project	Amount
July	Waimakariri United Football Club	Towards bibs	\$500
July	R13 Youth Development Trust	Towards Art Therapy supplies	\$600
August	Allstars U18	Towards training camp	\$500
August	Kaiapoi Garden Club	Towards costs of running Kaiapoi Garden Competition	\$500
September	North Canterbury Inclusive Sports festival	Towards hosting Inclusive Festival	\$500
September	YDOT	Towards Fun day and Adventure Race	\$517
October	Kaiapoi Community Garden	Towards floor covering for shed	\$550
October	Pines Kairaki Beaches Association	Towards Christmas Event	\$732



Waimakariri Access Group — Inclusive Sports

Waimakariri Youth Development Grant

Purpose of the grant

In 2018 the Waimakariri Community Boards established the Waimakariri Youth Development Grant to support one or more young people seeking:

- To enhance young people's skills and strengths; especially self-worth, decision-making, good relationships, resilience, positive mental health, life-skills and leadership
- To provide opportunities for young people to connect positively with their community in meaningful, practical ways
- To help and benefit others.

General overview

Available to young people living in the Waimakariri District aged between 12 and 24 at the time of application. An annual grant of up to \$4,000 is available for allocation to suitable applicants in any one year. The Youth Development Grant Committee may award more than one grant up to a combined maximum of \$4,000 in a financial year (1 July 2023 to 30 June 2024).

Application process

Applications must be fully completed and supported by two references. For example, teacher, school principal, employer, faith leader, youth worker or community group leader. One reference may be permitted from a member of the

applicant's wider family. The applications for the 2022/23–2024/25 financial year opened at the end of September 2021 and the closing date was 11 February 2022. Applications for the 2024/2025 financial year will open in September 2025. Information is available on the Council website at: waimakariri.govt.nz/community/funding-and-grants/youth-development-grant

Selection process

The Youth Development Grant Committee includes the four Community Board Chairs and an appointee of the Waimakariri Youth Council. The Committee is the sole decision-making body.

Short-listed applicants will be expected to present their application to the Committee in person and to answer any questions that the Committee may have. Applicants will be expected to provide an overview of their proposed project/activity to the Committee and they may choose how to do this. The Committee members will ask all applicants a series of general questions to help them make a decision.

The Council staff will work with the successful applicant to formalise an agreement on how the grant will be paid to them. This is really important as the Committee needs to be sure that the grant is spent on the project/activities the applicant has told them about and to also provide additional guidance to our youth.

Previous recipients

Group	Project	Amount
Waimakariri Student Volunteer Army	Towards the costs of purchasing high visibility vests, work gloves, a first aid kit and on spades to do volunteer work within the community	\$1,733
J Reyello, L Price and E Stokes	Towards attending the 2020 24-7 YouthWork National Training held in Wellington.	\$2,000
Abby Fraser	Towards establishing a weekly Breakfast Club for young people attending Rangiora High School without breakfast.	\$4,000
Lee Pockson	Towards hosting Theatresport workshops for young people.	\$1,000
Ruby Wilson	Towards hosting two Leadership Breakfasts for young leaders in the Waimakariri District.	\$3,000

Board's General Landscaping Budget

The 2024/25 Kaiapoi-Tuahiwi Community Board General Landscaping Budget is \$49,490. Allocations for the 2024/25 year have still to be finalized.

The following projects are currently being undertaken:

The current Board will be allocating its 2024/25 budget early in 2025.

Current Projects		
Town entrance development	Pending	\$75,810
Interpretive signs	Completed	\$20,000
Patchina's Walkway upgrade	Completed	\$7,700
Seat at BMX track	Completed	\$2,000
Raymond Herber sculpture	Completed	\$10,000
Passchendaele walkway	In progress	\$3,200



Blackwell's 150 Celebration Sculpture



Obelisk on Northern Bank of Kaiapoi River

Where and when are Meetings Held?

The Kaiapi-Tuahiwi Community Board meets at the Kāikanui Room, Ruataniwha Kaiapoi Civic Centre, commencing at 4pm:

The next meetings are scheduled on the third Monday of the month.

The dates for 2025 are:

17 February
17 March
14 April
19 May
16 June
21 July
18 August
15 September

Meetings will start at 4pm.

NOTE: As 2025 is an election year the last meeting of the current triannual will be held in September 2025



Ruataniwha Kaiapoi Service Centre

The Governance Team can be contacted for assistance with:

- Arranging Deputations
- Applying for Discretionary Grant Funding
- Applying for Youth Development Funding
- Access to Community Board documentation.

Governance Team contact details

- ☎ 0800 965 468
- ✉ com.board@wmk.govt.nz
- 📍 215 High Street, Private Bag 1005, Rangiora 7440

Interested in Being a Candidate in This Year's Local Body Elections?

We are searching for leaders to shape our communities and be part of local district and community decision-making.

Elections will be held on 11 October 2025 to elect:

- a. the Mayor
- b. Councillors as follows:
 - Kaiapoi-Woodend Ward: four (4) Councillors
 - Oxford-Ohoka Ward: two (2) Councillors
 - Rangiora-Ashley Ward: four (4) Councillors.
- c. Five (5) members for the Kaiapoi-Tuahiwi Community Board.
- d. Five (5) members of the Woodend-Sefton Community Board.
- e. Six (6) members of the Oxford-Ohoka Community Board on the following basis:
 - Three (3) members by electors in the Ohoka-Swannanoa subdivision
 - Three (3) members by electors in the Oxford subdivision.
- f. Election of eight (8) members of the Rangiora-Ashley Community Board on the following basis:
 - Two (2) members by electors in the Ashley subdivision
 - Six (6) members by electors in the Rangiora subdivision.

Candidate eligibility

A candidate for local authority elections must be:

- a. Enrolled on a parliamentary electoral roll somewhere in New Zealand; and
- b. A New Zealand citizen (either by birth or naturalisation ceremony).

Restrictions on candidates for local authority elections:

- a. A candidate may not seek nomination for more than one ward of Council.
- b. A candidate may seek nomination for Mayor and/or Council and/or a Community Board but may not also seek nomination for Canterbury Regional Council.
- c. A candidate may seek nomination for Mayor and/or a Ward of the Council and/or a Community Board, but in the event that they are elected:
 - as Mayor and a Ward Councillor then they must be treated as having vacated the ward office.
 - as a Ward Councillor and a Community Board member then they must be treated as having vacated the Community Board office.
- d. A candidate cannot be a person concerned or interested in contracts over \$25,000 with the territorial local authority. This restriction is waived if prior approval from the Office of the Auditor-General is obtained.
- e. An employee of a local authority who is elected as Mayor or Councillor must resign from their position as an employee of the local authority before taking up their elected position. This provision does not apply if an employee of a territorial authority is elected to a Community Board within the district of that territorial authority.
- f. Evidence of NZ citizenship will be requested at the time of candidate nomination.

Nominations

Nominations open on 1 July 2025 and close at 12 noon on 1 August 2025.

Each candidate must be nominated on the official nomination paper which is available during normal office hours from:

- all Council Service Centres
- by calling the Waimakariri District Council on 0800 965 468
- the Council's website waimakariri.govt.nz
- contacting elections@wmk.govt.nz

If you have any questions please contact the Deputy Electoral Officer at elections@wmk.govt.nz.



Council Facilities and Contact Details



Service Centres

waimakiriri.govt.nz

Ruataniwha Kaiapoi Civic Centre

176 Williams Street, Kaiapoi

☎ 03 375 5009

✉ kaiapoi@wmk.govt.nz

Opening hours

Monday to Friday: 9am–5pm

Rangiora Service Centre

215 High Street, Rangiora

☎ 0800 965 468

✉ office@wmk.govt.nz

Opening hours

Monday to Friday: 8.30am–5pm

Oxford Service Centre

34 Main Street, Oxford

☎ 03 311 9005

✉ oxford@wmk.govt.nz

Opening hours

Monday to Friday: 9am–5pm

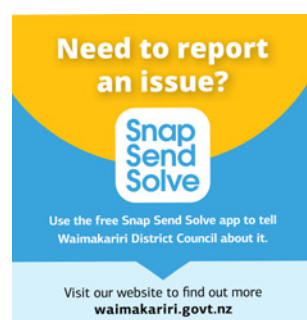
Saturday: 10am–12 noon

(Limited services on Saturday)

Snap Send Solve

You can report an issue instantly from your mobile if you spot something like a damaged footpath, litter or pothole.

Report an issue via
waimakariri.govt.nz/snapsendsolve.com



Libraries

waimakaririlibraries.com

Kaiapoi Library

176 Williams Street, Kaiapoi

☎ 03 375 5009

✉ library@wmk.govt.nz

Opening hours

Monday to Wednesday and Friday: 9am–5pm

Thursday: 9am–7pm

Saturday: 10am–2pm

Sunday: 1–4pm

Rangiora Library

Trevor Inch Memorial Library

141 Percival Street, Rangiora

☎ 03 311 8901

✉ library@wmk.govt.nz

Opening hours

Monday to Thursday: 9am–5pm

Friday: 9am–7pm

Saturday: 10am–2pm

Sunday: 1–4pm

Oxford Library

34 Main Street, Oxford

☎ 03 311 9006

✉ library@wmk.govt.nz

Opening hours

Monday to Friday: 9am–5pm

Saturday: 10am–12 noon



Aquatic Centres

waimakariri.govt.nz/aquatic-facility

Kaiapoi Aquatic Centre

9 Cass Street, Kaiapoi

☎ 03 375 5041

Opening hours

Monday to Friday: 6am–3.30pm and 6–9pm

Saturday and Sunday: 7.30am–7pm

Public Holidays: 10am–7pm

Christmas Day: Closed

Dudley Park Aquatic Centre

47 Church Street, Rangiora

☎ 03 311 8905

Opening hours

Monday to Friday: 6am–9pm

Saturday and Sunday: 7.30am–7pm

Public Holidays: 10am–7pm

Christmas Day: Closed

Oxford Community Aquatic Centre

9 Burnett Street, Oxford

☎ 03 311 8921

Opening hours

Summer only from late November

Monday to Friday: 8.30am–6.30pm

Saturday and Sunday: 10am–7pm

Public Holidays: 10am–7pm

Christmas Day: Closed

Transfer Stations

Southbrook Resource Recovery Park

284 Flaxton Road, Rangiora

☎ 03 313 5499

Resale Store: 03 313 5798

Opening hours

Monday to Sunday: 8.30am–4.30pm

Public Holidays: Closed

Oxford Transfer Station

46 High Street, Oxford

Opening hours

Friday: 12.30pm–4.30pm

Sunday: 12 noon–4.30pm

Public Holidays: Closed



Community Facilities

Kaiapoi Community Centre

24 Sewell Street, Kaiapoi

Ruataniwha Kaiapoi Civic Centre

176 Williams Street, Kaiapoi

Trousselot Park and Band Rotunda

33 Charles Street, Kaiapoi

Art and Culture

Art on the Quay

176 Williams Street, Kaiapoi

Opening hours

Monday to Wednesday and Friday: 9am–5pm

Thursday: 9am–7pm

Saturday: 10am–2pm

Sunday: 1–4pm

Chamber Gallery

141 Percival Street, Rangiora

Opening hours

Monday to Thursday: 9am–5pm

Friday: 9am–7pm

Saturday: 10am–2pm

Sunday: 1–4pm

Request a Service

The following service requests can be lodged online with the Council. The location of the request is required.

Please contact Council directly on 0800 965 468 regarding urgent requests such as excessive noise, flooding or public toilet issues.

Online Service requests

- Cemeteries
- Dog complaints
- Drains
- Footpaths
- Litter/rubbish
- Parks
- Public water supplies
- Roads and streets
- Rubbish/recycling collections
- Sewer
- Signs
- Trees
- Vandalism/graffiti
- Water races

Go to waimakariri.govt.nz/services/online-services



Artwork Remembering Kaiapoi as a Thriving Port



Bench unveiling in Tuahiwi



Silverstream Reserve Plantings



215 High Street
Private Bag 1005
Rangiora 7440, New Zealand
Phone 0800 965 468
waimakariri.govt.nz

2412192227092