

WAIMAKARIRI DISTRICT COUNCIL
HISTORIC HERITAGE ITEM RECORD FORM

2021 District Plan Item No. HH080

HERITAGE ITEM NAME former Moeraki Downs/Springbank Railway Station storage shed, stockyards & loading bank

ADDRESS 1164 Oxford Road, Springbank

PHOTOGRAPH



(Dr A McEwan, 10 July 2019)

DISTRICT PLAN ITEM NO. H100 **HNZ LIST NO. & CATEGORY** n / a
(at time of assessment)

LEGAL DESCRIPTION Lot 1 DP 71597

VALUATION NUMBER 2158005902

DATE OF CONSTRUCTION 1874 (shed & loading bank?) + 1899 (stockyards)

**ARCHITECT/DESIGNER/
BUILDER** NZ Railways Department / Public Works Office

STYLE Industrial vernacular

PHYSICAL DESCRIPTION

Single-storey building with square footprint and gabled roof. Large loading bay doors beneath gable ends (east & west elevations). Loading bank east of storage shed runs on an east-west axis. Three stock pens with rectangular footprint immediately west of the storage shed. Loading ramp at south-east corner of yards.

MATERIALS/STRUCTURE

Timber framing and corrugated iron cladding (shed). Concrete and earth (loading bank). Timber posts and rails (stockyards).

ADDITIONS/ALTERATIONS

Railway line removed (post-1959). Installation of railway station style locality sign (2001).

SETTING

The former railway station structures are located on the north side of Oxford Road (SH 72), west of its intersection with Kennedys Hill Road. The former storage shed is situated on the road boundary, flanked by the stockyards and loading bank. The extent of setting is limited to the immediate surrounds of the former storage shed, stockyards and loading bank, including the remains of the stationmaster's house (1874) and notwithstanding the potential archaeological values of the land parcel as a whole.

HISTORY

The Rangiora to Oxford branch line opened as far as Cust on 7 December 1874; the flag station at Moeraki Downs having opened on 1 December of the same year. At the time, it was reported that the station site accommodated a house for the stationmaster, a ticket office and waiting room as well as a 'galvanized iron covered storage shed 44 x 44ft [13.4m square] in area' (*Globe* 2 December 1874, p. 2). According to the *Cyclopedia of New Zealand*, published in 1903, the flag station was built to serve the Springbank estate. At the turn of the 20th century the local post office (est. 1875) was operated by the postmistress Mrs Julia Hubbard from the railway cottage close by the station. The three-room building that had been built as the parcel room and ticket office had earlier been blown off its foundations and destroyed (September 1889). Stockyards were erected at the station in early 1899. In 1912 the station was renamed Springbank to fall in to line with the local post office and avoid any confusion with Moeraki in North Otago. The station closed to passengers on 9 February 1931 and closed entirely on 19 April 1959; the line has since been removed. In 2001 the Waimakariri District Council reinstated the locality sign for the Springbank Railway Station in front of the former storage shed, as part of a programme to mark the Rangiora-Oxford branch line.

HISTORICAL AND SOCIAL SIGNIFICANCE

The former Moeraki Downs/Springbank Railway Station storage shed, stockyards & loading bank have historical significance for their association with the Rangiora and Oxford branch railway line and, more generally, the development of Canterbury's railways infrastructure since the early 1870s. The shed may be one of the oldest railway buildings remaining on its original site in New Zealand and dates from the Vogel era of railway construction in New Zealand.

CULTURAL AND SPIRITUAL SIGNIFICANCE

The former Moeraki Downs/Springbank Railway Station storage shed, stockyards & loading bank have cultural value as a demonstration of the way of life of past station staff and patrons on the Rangiora-Oxford branch line.

ARCHITECTURAL AND AESTHETIC SIGNIFICANCE

The former Moeraki Downs/Springbank Railway Station storage shed, stockyards & loading bank have architectural value as industrial vernacular structures designed to be fit for purpose and conforming to the standard models devised by the NZ Railways Department. The storage shed is an example of the five major historic railway building types, the others being station buildings, signal boxes, engine sheds and railway houses.

TECHNOLOGICAL AND CRAFTSMANSHIP SIGNIFICANCE

The former Moeraki Downs/Springbank Railway Station storage shed, stockyards & loading bank have technological and craftsmanship value for their Victorian construction methods and materials. EG Wright and Joseph Taylor were the contractors for the Rangiora-Oxford railway. The builder of the stockyards is unknown at this time.

CONTEXTUAL SIGNIFICANCE

The former Moeraki Downs/Springbank Railway Station storage shed, stockyards & loading bank have contextual significance as an inter-related group of historic features on the Rangiora-Oxford road and for their relationship with the same railway structures that survive at Fernside.

ARCHAEOLOGICAL AND SCIENTIFIC SIGNIFICANCE

As the structures pre-date 1900 their site has potential archaeological significance relating to the 19th century development of the station precinct.

SUMMARY OF HERITAGE SIGNIFICANCE

The former Moeraki Downs/Springbank Railway Station storage shed, stockyards & loading bank have overall heritage significance to Springbank and to Waimakariri district as a whole. The structures have historical and social significance for their association with the development of the Rangiora-Oxford branch railway line and cultural value for their association with the way of life of the station's early staff and patrons. The former Moeraki Downs/Springbank Railway Station storage shed, stockyards & loading bank have architectural value as Vogel-era industrial vernacular structures and technological and craftsmanship value for the methods and materials used in their construction. The former Moeraki Downs/Springbank Railway Station storage shed, stockyards & loading bank have contextual significance as a group of historic features on the Oxford-Rangiora road and their site has potential archaeological significance in view of its development since the mid-1870s.

HERITAGE CATEGORY

B

REFERENCES

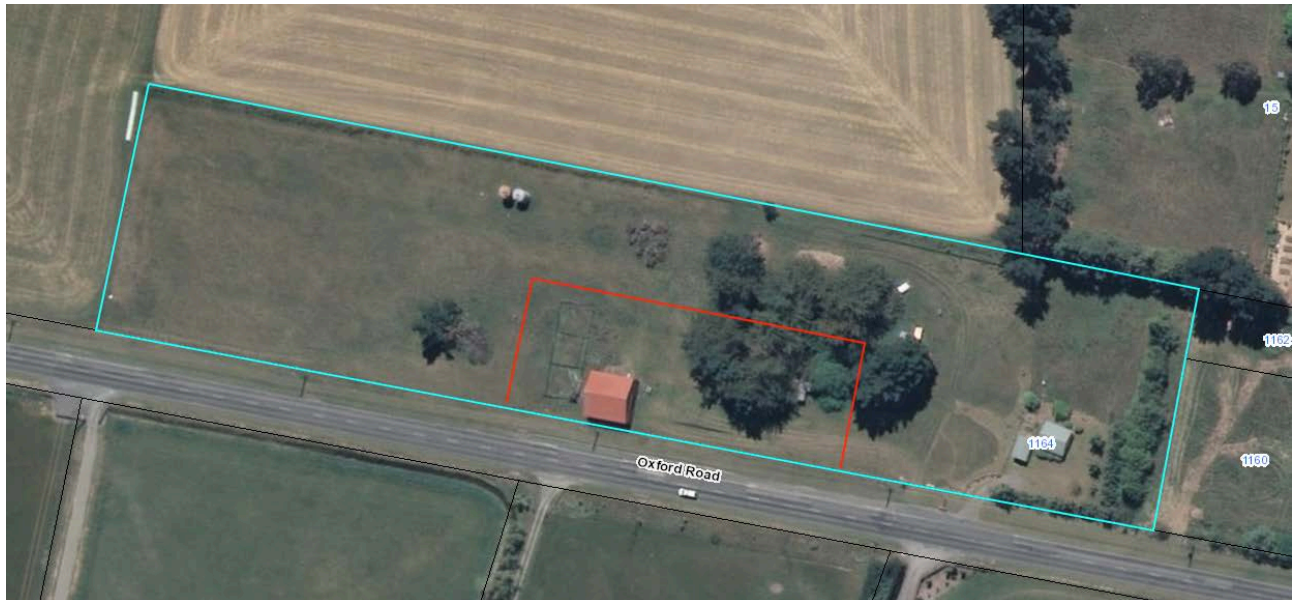
- *Press* 27 May 1873, p. 1; 22 August 1873, p. 3; 24 June 1874, p. 2; 2 December 1874, p. 4; 27 February 1877, p. 3; 14 December 1898, p. 4; 6 November 1940, p. 4.
- *Globe* 2 December 1874, p. 2; 26 October 1875, p. 2
- *Northern Outlook* 28 April 2001, undated.
- *North Canterbury News* 26 June 2001, undated.
- *Lyttelton Times* 14 December 1898, p. 5; 16 September 1912, p. 7.
- *Ashburton Guardian* 23 September 1912, p. 4.
- *Star* 10 September 1889, p. 3; 20 July 1901, p. 4; 11 May 1912, p. 8.
- *Cyclopedia of New Zealand - Canterbury Provincial District* Christchurch, 1903 (available online).
- <https://teara.govt.nz/en/biographies/2t49/troup-george-alexander>
- <http://nzrailwaysrollingstocklists.weebly.com/stations.html>
- http://www.railheritage.org.nz/assets/dates_and_names.pdf
- <http://www.railheritage.org.nz/Register/Category.aspx?c=9>
- <http://www.heritage.org.nz/the-list/details/5218>
- <https://libraries.waimakariri.govt.nz/heritage/local-history/places-of-the-waimakariri/oxford-and-districts/history-of-the-oxford-rangiora-sheffield-railway-line>

REPORT COMPLETED

21 February 2019

AUTHOR

Dr Ann McEwan / Heritage Consultancy Services



Extent of setting, limited to immediate setting of former Moeraki Downs/Springbank Railway Station storage shed, stockyards & loading bank, and including the railway cottage remains, 1164 Oxford Road, Springbank.



Aerial view of above, 1965-69. WDC.