

WAIMAKARIRI DISTRICT COUNCIL
HISTORIC HERITAGE ITEM RECORD FORM

2021 District Plan Item No. HH096
HERITAGE ITEM NAME Rangiora Borough School Diamond Jubilee Memorial Gates
ADDRESS 157 King Street, Rangiora
PHOTOGRAPH



(www)

DISTRICT PLAN ITEM NO. n / a **HNZ LIST NO. & CATEGORY** n / a
(at time of assessment)

LEGAL DESCRIPTION Part Lot 1 DP 26526

VALUATION NUMBER 2166109800

DATE OF CONSTRUCTION 1934

**ARCHITECT/DESIGNER/
BUILDER** Wadey & Efford, contractors

STYLE Neoclassical

PHYSICAL DESCRIPTION

Paired classically-styled pillars from which are hung vehicle and pedestrian gates. Openings are framed by low curved walls terminated by matching pillars. Inset commemorative plaques and inscriptions.

MATERIALS/STRUCTURE

Concrete, wrought iron.

ADDITIONS/ALTERATIONS

Unknown, if any.

SETTING

The memorial gates are situated within the grounds of Rangiora Borough School, on the west side of King Street. The gates are immediately adjacent to the footpath and offer both pedestrian and vehicular access to the property. The extent of setting is limited to the immediate environs of the memorial gates within the school campus.

HISTORY

The memorial gates erected to mark the 60th anniversary of Rangiora District School were officially opened on 28 July 1934. The gates were largely funded by the former pupils who had attended the school's jubilee celebrations in October 1933. Tenders for the gates had been called in February 1934 and the Mayor of Rangiora, WA Rowse, presided over the opening ceremony in late July. A secondary pair of gates to the north along King Street are fitted with World War I and II commemorative plaques.

HISTORICAL AND SOCIAL SIGNIFICANCE

The Diamond Jubilee Memorial Gates have historic and social significance for their association with the past and present staff and students of Rangiora Borough School and, more specifically, the Diamond Jubilee celebration held at the school in October 1933.

CULTURAL AND SPIRITUAL SIGNIFICANCE

The Diamond Jubilee Memorial Gates have cultural significance as a site of community identity and historic continuity. The gates have commemorative value and are included on the database of New Zealand memorials on nzhistory.govt.nz.

ARCHITECTURAL AND AESTHETIC SIGNIFICANCE

The Diamond Jubilee Memorial Gates have aesthetic value for their Neoclassical styling and symmetry. The gates were designed to complement the modern, open air classrooms and grounds of the school, which was redeveloped between 1928 and 1932.

TECHNOLOGICAL AND CRAFTSMANSHIP SIGNIFICANCE

The Diamond Jubilee Memorial Gates have technological and craftsmanship value for the quality of their construction and detailing. Wadey & Efford were local building contractors. The firm, which was run by William Efford junior (1877-1960) from 1910, was also responsible for erecting the Victoria Park band rotunda (H048, 1906) and the Catholic convent (1907), both in Rangiora, the Woodend Methodist Church (H085, 1910-11), and St Barnabas's Anglican Church at Woodend (H086, 1932-33). Local firm J Skilling and Co. manufactured the wrought iron gates.

CONTEXTUAL SIGNIFICANCE

The Diamond Jubilee Memorial Gates have contextual significance as a historic feature marking the principal entry to the school grounds and in relationship to a smaller set of gates, to the north along King Street, that bear World War I and II commemorative plaques. The jubilee memorial gates are one of the oldest structures on the school grounds, in view of the significant redevelopment that has occurred on the campus, especially since the 2010/11 Canterbury earthquakes.

ARCHAEOLOGICAL AND SCIENTIFIC SIGNIFICANCE

As the memorial gates post-date 1900, any potential archaeological significance of the site would likely relate to its colonial use and development. The Rangiora Borough boys and girls schools opened on this site in August 1874.

SUMMARY OF HERITAGE SIGNIFICANCE

The Rangiora Borough School Diamond Jubilee Memorial Gates have overall heritage significance to Rangiora and the district of Waimakariri. The memorial gates have historical and social significance for their association with the past and present staff and students of Rangiora Borough School and the 1933 jubilee of its foundation. The Diamond Jubilee Memorial Gates have cultural significance given their commemorative purpose and aesthetic

value for their Neoclassical design. The Jubilee Memorial Gates have technological and craftsmanship value for the quality of their construction and detailing by a successful local contracting firm and contextual significance as a historic feature marking the principal entry to the Rangiora Borough School campus. Any potential archaeological value of the memorial gates' site would likely relate to the 19th century use and development of the school.

HERITAGE CATEGORY

B

REFERENCES

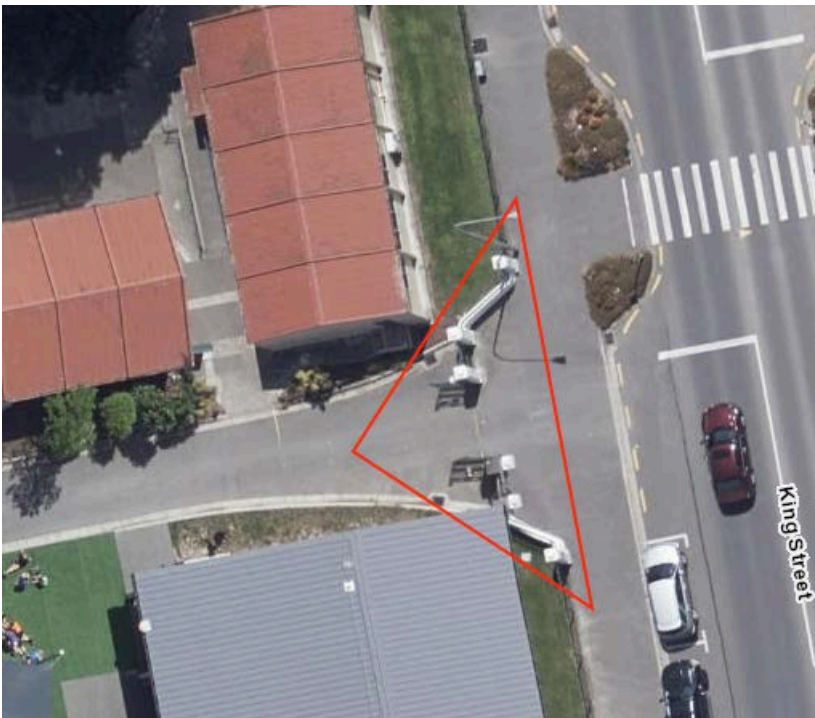
- *Press* 30 October 1933, p. 16; 2 March 1934, p. 4; 13 April 1934, p. 4; 20 July 1934, p. 4; 30 July 1934, p. 4.
- *North Canterbury Gazette* 26 May 1933, p. 12; 18 August 1933, p. 4; 16 February 1934, p. 1; 2 March 1934, p. 7; 24 July 1934, p. 4; 31 July 1934, p. 4.
- <https://nzhistory.govt.nz/media/photo/rangiora-borough-school-memorial>
- DN Hawkins *Rangiora: the passing years and people in a Canterbury country town* Rangiora, 1993.

REPORT COMPLETED

2 July 2019

AUTHOR

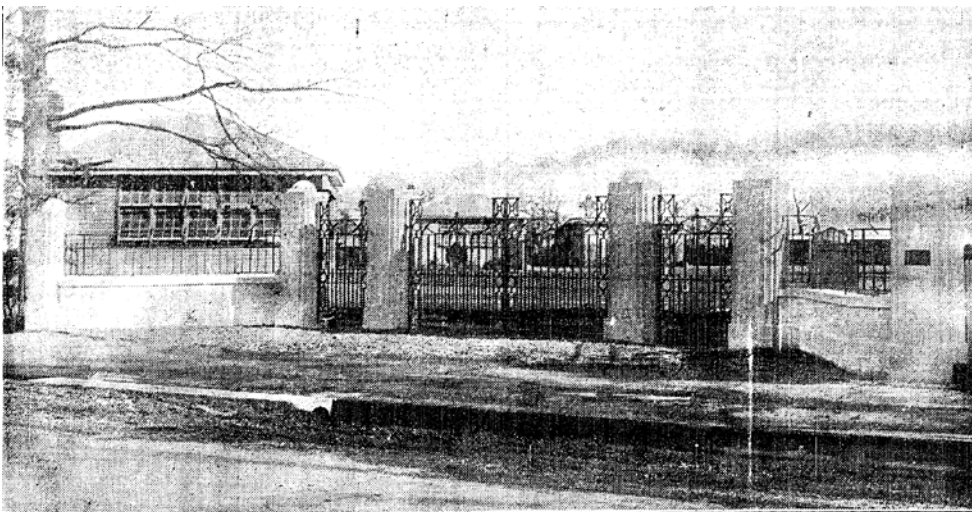
Dr Ann McEwan / Heritage Consultancy Services



Extent of setting, limited to immediate environs, Rangiora Borough School, 157 King Street, Rangiora.



Land parcel as a whole with gates marked by star.



The gates at the time of their official opening. *Press* 28 July 1934, p. 24.