

WAIMAKARIRI DISTRICT COUNCIL
HISTORIC HERITAGE ITEM RECORD FORM

2021 District Plan Item No. HH048
HERITAGE ITEM NAME former St Alban's Anglican Church vicarage / former Te Wai Pounamu Maori Girls' College
ADDRESS 536 Mill Road, Ohoka

PHOTOGRAPH



(WDC file)

DISTRICT PLAN ITEM NO. H041 **HNZ LIST NO. & CATEGORY** 3738 / 2
(at time of assessment)

LEGAL DESCRIPTION Lot 2 DP 396670

VALUATION NUMBER 2174004200

DATE OF CONSTRUCTION 1879-80

**ARCHITECT/DESIGNER/
BUILDER** CG & CJ Chapman, architects; Tweedie, Withell & Co.,
builders

STYLE Domestic Gothic Revival

PHYSICAL DESCRIPTION

Two-storey building with rectangular footprint and gabled roof forms. Principal, north-facing elevation is symmetrical and features boxed bay windows, decorative bargeboards, rusticated weatherboards and quoins. Double-hung sash windows. Lean-to veranda on west elevation. Symmetrical, south-facing rear elevation has single-storey lean-to addition extending beyond the original width of the house.

MATERIALS/STRUCTURE

Timber frame and weatherboard cladding, corrugated metal roofing.

ADDITIONS/ALTERATIONS

South-facing lean-to addition (c.1982). Chimneys removed after EQ damage (September 2010).

SETTING

The dwelling is located on the north side of Mill Road, midway between Bradleys Road in the west and Whites Road in the east. The house is set back from the roadway within a mature garden and the site is bordered to the north by a branch of the Ohoka Stream. St Alban's Anglican Church (H123) is to the east of its former vicarage. The extent of setting is limited

to the front portion of the property on which the house is located, notwithstanding the potential archaeological values of the land parcel as a whole.

HISTORY

The Flaxton-cum-Eyreton vicarage was erected in Ohoka in 1879-80 because it was mid-way between the Anglican churches at Flaxton (1867) and Eyreton (1874). St Alban's Anglican Church was subsequently built at Ohoka and consecrated on 31 May 1882 by Bishop Harper of Christchurch. The Rev FR Inwood was the first resident vicar. In 1909 Te Wai Pounamu Maori Girls' College was established in the vicarage, which had become vacant with the merger of the St Stephen's, Tuahiwi and St Alban's parishes. The Anglican boarding school was established by the Rev Charles Fraer for the purpose of providing post-primary education to Maori girls from throughout the South Island and the Chatham Islands. Fraer (c.1871-1932) and his wife Annie (1868-1939) were based at Tuahiwi from 1904 until 1918, having worked amongst Maori communities for some years previously. The college was opened by Bishop Julius on 4 March 1909 with a roll of twelve pupils. The first teacher was Mrs Ethel Miller, who had previously taught at the Maori Church Mission School at Ohoka in Marlborough. Te Wai Pounamu relocated to Christchurch in 1921 and ten years later the house site was subdivided from the church property so that it could be sold by the Church Property Trustees. The church then passed in to private hands and a new vicarage at Kaiapoi (1932) was erected, with contributions from the parishioners of Kaiapoi, Ohoka, Eyreton and Flaxton. In a poor condition by the late 1970s, the house was restored by Ian and Lindsay Bisman, the former was a long-serving architect in the firm of Warren and Mahoney. More recently the property has been subdivided to its present extent; it remains in residential use and is featured in the Ohoka Stream Historic Walk.

HISTORICAL AND SOCIAL SIGNIFICANCE

The former St Alban's Anglican Church vicarage and Te Wai Pounamu Maori Girls' College has high historical and social significance for its association with the district's Anglican ministers from 1880 until 1907 and, in the early 20th century, with the establishment of Te Wai Pounamu Maori Girls' College (1909-90). Te Wai Pounamu was the only Maori boarding school established in the South Island and was described at its opening in March 1909 as continuing the earlier work of Canon Stack at Kaiapoi. The building is also significant for its association with Charles and Annie Fraer; a memorial to Rev Fraer was erected at Te Wai Pounamu College in Christchurch in December 1932.

CULTURAL AND SPIRITUAL SIGNIFICANCE

The former St Alban's Anglican Church vicarage and Te Wai Pounamu Maori Girls' College has cultural significance as a former site of Anglican pastoral care and Maori education that is esteemed by Ngai Tahu, the Anglican Maori Diocese of Te Waipounamu (South Island), and the former pupils and staff of Te Wai Pounamu Maori Girls' College.

ARCHITECTURAL AND AESTHETIC SIGNIFICANCE

The former St Alban's Anglican Church vicarage and Te Wai Pounamu Maori Girls' College has architectural significance as a Domestic Gothic Revival style dwelling designed by Rangiora architects CG & CJ Chapman. The two men were cousins and also worked as commission agents and surveyors. Charles George Chapman (c.1838-82) was also an early teacher in the township and served as Rangiora's inaugural borough clerk from 1878 until his death four years later. The Chapmans also designed the Sunday School beside St John's Anglican Church (1879) and the Union Bank of Australia (1882), both in Rangiora.

TECHNOLOGICAL AND CRAFTSMANSHIP SIGNIFICANCE

The former St Alban's Anglican Church vicarage and Te Wai Pounamu Maori Girls' College has technological and craftsmanship value for its construction and detailing by Rangiora builders Tweedie, Withell & Co. Andrew Tweedie was a Scottish-born joiner who emigrated to New

Zealand in 1876. He erected a large number of school buildings and was resident in the Cheviot area by the mid-1890s.

CONTEXTUAL SIGNIFICANCE

The former St Alban's Anglican Church vicarage and Te Wai Pounamu Maori Girls' College has contextual significance as a historic feature in Ohoka and for its relationship with St Alban's Anglican Church (H123) in Ohoka and the Te Waipounamu Maori Cultural Centre of the Anglican Maori Diocese O Te Waipounamu, which stands on the former college site in Ferry Road, Christchurch.

ARCHAEOLOGICAL AND SCIENTIFIC SIGNIFICANCE

As the former vicarage pre-dates 1900 its site has potential archaeological value relating to the structure's construction and early use.

SUMMARY OF HERITAGE SIGNIFICANCE

The former St Alban's Anglican Church vicarage and former Te Wai Pounamu Maori Girls' College has high overall heritage significance to Ohoka and Waimakariri district as a whole. The dwelling has high historic and social significance for its association with the early Anglican clergy of Ohoka and the establishment of Te Wai Pounamu Maori Girls' College, the only school of its kind in the South Island. The former vicarage and school has cultural significance for the esteem in which it is held by the Anglican Maori Diocese O Te Waipounamu and former pupils of the college. The former vicarage and school has architectural significance as a Domestic Gothic Revival style residence designed by Rangiora architects Charles and CJ Chapman and technological and craftsmanship value for its construction and detailing by Rangiora builders Tweedie, Withell & Co. The former St Alban's Anglican Church parsonage and former Te Wai Pounamu Maori Girls' College has contextual significance as a historic feature at Ohoka and for its relationship with both the neighbouring St Alban's Anglican Church and the Te Waipounamu Cultural Centre in Ferry Road, Christchurch. The site of the former vicarage and school has potential archaeological value in view of the structure's pre-1900 construction.

HERITAGE CATEGORY

A

REFERENCES

- *Press* 17 May 1880, p. 2; 3 December 1881, p. 4; 19 November 1909, p. 5; 30 May 1921, p. 2; 24 May 1930, p. 4; 3 March 1932, p. 14; 5 March 1932, p. 17; 16 December 1932, p. 2; 28 July 2012, p. C8 (available online).
- *Star* 6 May 1880, p. 2; 5 March 1909, p. 1; 30 November 1920, p. 8.
- *Lyttelton Times* 27 March 1879, p. 4; 14 May 1879, p. 4; 13 October 1879, p. 7; 12 April 1880, p. 6; 3 March 1909, p. 3.
- *Ashburton Guardian* 11 November 1880, p. 2.
- *Te Ao Hou* No. 70, 1972, pp. 61-62.
- *Sun* 1 July 1915, p. 11; 18 October 1916, p. 3; 17 August 1920, p. 4.
- *Northern Outlook* 15 July 2000, p. 12.
- *Northern Advocate* 4 September 1922, p. 4.
- <https://libraries.waimakariri.govt.nz/heritage/local-history/places-of-the-waimakariri/surrounding-areas/history-of-the-churches-of-clarkville,-eyretton,-flaxton,-ohoka-and-swannanoa>
- <http://www.heritage.org.nz/the-list/details/3738>
- <http://nzetc.victoria.ac.nz/tm/scholarly/tei-Cyc03Cycl-t1-body1-d4-d22.html>
- <http://greatgrandmaswickerbasket.blogspot.com/2012/05/ohoka-photos-from-our-family-photo.html>
- <http://www.waipounamu.org.nz/about/new-page-2/>

- http://ketewaimakariri.peoplesnetworknz.info/schools_of_the_waimakariri/topics/show/75-te-waipounamu-college
- <http://www.avonside.school.nz/our-school/our-history>
- https://ngaitahu.iwi.nz/our_stories/te-ao-o-te-maori-tk75/
- <https://teara.govt.nz/en/biographies/4f20/fraer-annie-isabel>
- <https://teara.govt.nz/en/biographies/5r14/riwai-te-kiato>
- <http://nzetc.victoria.ac.nz/tm/scholarly/tei-TayLore-t1-body1-d5.html>
- <https://teara.govt.nz/en/maori-education-matauranga/page-4>
- http://www.anglicantaonga.org.nz/news/tikanga_maori/lament
- DN Hawkins *Rangiora: the passing years and people in a Canterbury country town* Rangiora, 1993.

REPORT COMPLETED

11 February 2019

AUTHOR

Dr Ann McEwan / Heritage Consultancy Services



Extent of setting, limited to the front of the property, 536 Mill Road, Ohoka.

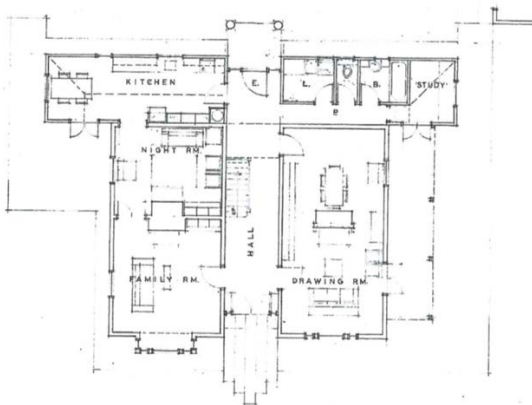


Great Grandma's Wicker Basket family history blog.

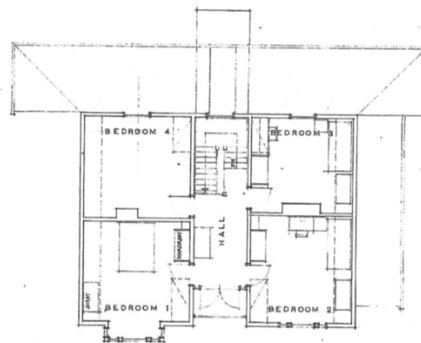
<http://greatgrandmaswickerbasket.blogspot.com/2012/05/ohoka-photos-from-our-family-photo.html>



N O R T H



G R O U N D F L O O R



F I R S T F L O O R