

**WAIMAKARIRI DISTRICT COUNCIL  
HISTORIC HERITAGE ITEM RECORD FORM**

---

**2021 District Plan Item No.** HH029  
**HERITAGE ITEM NAME** former Kaiapoi Island Church of England Day School /  
St Augustine's Anglican Church  
**ADDRESS** 8 Island Road, Clarkville, Kaiapoi

**PHOTOGRAPH**



(www)

**DISTRICT PLAN ITEM NO.** H002      **HNZ LIST NO. & CATEGORY** 3740 / 2  
(at time of assessment)

**LEGAL DESCRIPTION** Lot 1 DP 83594

**VALUATION NUMBER** 2173019100

**DATE OF CONSTRUCTION** c.1858 or 1862-63

**ARCHITECT/DESIGNER/  
BUILDER** Unknown

**STYLE** Colonial Gothic Revival

**PHYSICAL DESCRIPTION**

Single-storey building with irregular rectangular footprint and slightly flared, gabled roof forms. Church has gabled vestry on south elevation and a gabled entrance porch, with diagonal bracing, on northern elevation. Sanctuary at east end has lower roof. Cusped lancet arched windows with triple window at east end; diamond-pattern leadlight windows. Conical belltower over entrance porch.

**MATERIALS/STRUCTURE**

Timber framing and weatherboard cladding, corrugated metal roofing.

**ADDITIONS/ALTERATIONS**

Enlarged (c.1872/74?). Former Methodist church relocated to site for use as church hall (1968). Bell tower addition (c.1976).

**SETTING**

The church is set back from the road boundary on the east side of Island Road on a plot that is bounded to the south by Tram Road. A churchyard is to the north of the church and a Sunday School hall is to the east. The extent of setting is the original church property on which the church and churchyard were located, rather than the land parcel as a whole.

## **HISTORY**

A day school was opened by the (Anglican) Church of England on Kaiapoi Island in 1858. The school, which also served as a chapel for services typically conducted by lay readers, was located on a reserve set aside for a church by the Canterbury Provincial Council in December 1858. In November 1863 it was reported that the schoolroom remained unlined, a year after it had been built; conflicting historic sources therefore mean that a construction date of 1858 or 1862-63 are both possible. At the end of 1863 there were 73 pupils on the roll, with average attendance varying between 25 and 45. The school operated until 1874, the Board of Education having declared the educational district of Kaiapoi Island North and a school committee established in late 1873. A new public school, which became known as the Clarkville School in 1889, was built on a site to the west of the day school. The former day school was known as the Clarkville Chapel of Ease by the late 1880s; by the late 1890s it had been renamed St Augustine's. Annual reunions of former pupils, and their descendants, of the day school were held in the 1920s. The Sunday School hall (1949) on the property was relocated from the Clarkville Methodist Church site in Tram Road in 1968. St Augustine's is now part of the Kaiapoi Anglican Parish and services are held on the second Sunday of the month.

## **HISTORICAL AND SOCIAL SIGNIFICANCE**

St Augustine's Anglican Church has historical and social significance for its association with the Anglican congregation of Kaiapoi Island and the history of the church education and community since c.1858.

## **CULTURAL AND SPIRITUAL SIGNIFICANCE**

St Augustine's Anglican Church has cultural and spiritual significance as a place of Anglican worship and fellowship. The building also embodies the esteem in which the Church of England day school was held in the past by its former pupils, as evidenced by the annual reunions that once took place for the school.

## **ARCHITECTURAL AND AESTHETIC SIGNIFICANCE**

St Augustine's Anglican Church has architectural significance as a mid-19<sup>th</sup> century Colonial Gothic Revival style building that demonstrates the economy with which its ecclesiastical purpose is communicated through its form and fenestration. The architect of the building is currently unknown, although George Mallinson has been credited with the design in the past, most likely because he designed the Methodist church at Kaiapoi in 1860.

## **TECHNOLOGICAL AND CRAFTSMANSHIP SIGNIFICANCE**

St Augustine's Anglican Church has technological and craftsmanship value for the evidence it provides of mid-19<sup>th</sup> century construction methods and materials. The builder of the church is currently unknown.

## **CONTEXTUAL SIGNIFICANCE**

St Augustine's Anglican Church has contextual significance as a historic landmark in Clarkville and for its relationship with the adjacent churchyard and Sunday School hall.

## **ARCHAEOLOGICAL AND SCIENTIFIC SIGNIFICANCE**

As the church pre-dates 1900 its site has potential archaeological significance relating to the colonial development of the property by the Anglican church.

## SUMMARY OF HERITAGE SIGNIFICANCE

The former Kaiapoi Island Church of England Day School / St Augustine's Anglican Church has overall heritage significance to Clarkville, Kaiapoi and Waimakariri district as a whole. The church has historic and social significance for its association with the community of Clarkville since c.1858 and cultural and spiritual significance for its religious use and community esteem. St Augustine's Anglican Church has architectural significance as a Colonial Gothic Revival style building and technological and craftsmanship value for its mid-Victorian construction and detailing. St Augustine's Anglican Church has contextual significance as a local landmark and for its relationship with the churchyard and Sunday School hall on the same site. The church property has potential archaeological significance in view of its mid-19<sup>th</sup> century development and use.

## HERITAGE CATEGORY

B

## REFERENCES

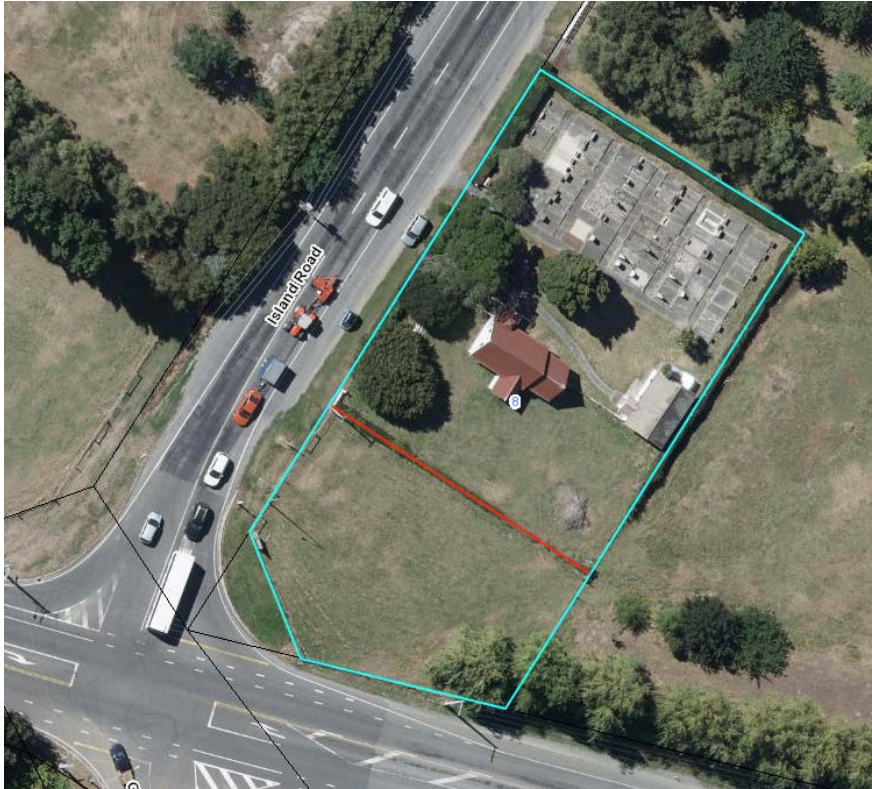
- *Press* 1 March 1862, p. 6; 21 October 1872, p. 2; 11 September 1873, p. 4; 16 June 1874, p. 1; 1 January 1875, p. 2; 28 August 1888, p. 4; 1 May 1889, p. 3; 15 April 1890, p. 6; 19 April 1893, p. 6; 26 April 1897, p. 2; 24 April 1907, p. 5; 8 November 1911, p. 1; 26 October 1920, p. 2; 17 July 1924, p. 3; 23 October 1925, p. 16; 23 October 1928, p. 3; 27 October 1930, p. 6; 12 February 1940, p. 10.
- *Lyttelton Times* 24 December 1858, p. 5; 18 June 1859, p. 4; 12 October 1861, p. 4; 2 November 1861, p. 3; 18 July 1863, p. 5; 26 September 1863, p. 5; 17 November 1863, p. 3; 6 September 1873, p. 1; 17 November 1873, p. 3; 24 March 1879, p. 6.
- *North Canterbury Gazette* 23 October 1936, p. 1.
- *Globe* 7 December 1874, p. 4.
- *Star* 14 November 1871, p. 2; 28 December 1871, p. 3; 24 January 1889, p. 3.
- <http://www.heritage.org.nz/the-list/details/3740>
- <http://anglicanlife.org.nz/churches/st-augustines-clarkville/>
- <http://www.kaiapoianglican.nz/about-us/history/>
- <https://libraries.waimakariri.govt.nz/heritage/local-history/places-of-the-waimakariri/surrounding-areas/history-of-the-churches-of-clarkville,-eyreton,-flaxton,-ohoka-and-swannanoa>
- <http://don-donovan.blogspot.com/2009/08/country-churches-of-nz-88-st-augustines.html>
- *Cyclopedia of New Zealand - Canterbury Provincial Council District* Christchurch, 1903; available online.
- DN Hawkins *Beyond the Waimakariri* Christchurch, 2001; available online.
- CWD Hodgson *The Parish of Kaiapoi, 1853-1982* Kaiapoi, 1982.

**REPORT COMPLETED**

3 March 2019

**AUTHOR**

Dr Ann McEwan / Heritage Consultancy Services



Extent of setting, St Augustine's Anglican Church, 8 Island Road, Clarkville, Kaiapoi.