

WAIMAKARIRI DISTRICT COUNCIL
HISTORIC HERITAGE ITEM RECORD FORM

HERITAGE ITEM NAME 'Bellgrove' farmhouse [aka 'Belgrove']
ADDRESS 46 Inch Crescent, Rangiora (formerly 52 Kippenberger Avenue)

PHOTOGRAPH



(3 April 2023)

DISTRICT PLAN ITEM NO. H049 **HNZ LIST NO. & CATEGORY** 1821 / 2
(at time of assessment)

LEGAL DESCRIPTION Lot 1400 DP 589492

VALUATION NUMBER 2166200049

DATE OF CONSTRUCTION c.1880?

**ARCHITECT/DESIGNER/
BUILDER** Unknown

STYLE Domestic Gothic Revival

PHYSICAL DESCRIPTION

Two-storey dwelling with irregular rectangular footprint and gabled roof forms. Principal, south facing elevation has symmetrical composition with recessed entry and balcony above between gabled bays with bay windows. Decorative bargeboards, finials, double-hung sash windows. Bullnose veranda on east elevation is partially glazed. Modern single-storey colonial cottage style extension at the rear (north elevation).

MATERIALS/STRUCTURE

Timber framing and weatherboard cladding, corrugated metal roofing.

ADDITIONS/ALTERATIONS

Unspecified alts/adds (c.1911). Replacement of service wing at rear of house with new single-storey living, dining and kitchen/laundry wing (Sheppard & Rout, architects, c.2002).

SETTING

The dwelling stands within a new residential subdivision on the north side of Kippenberger Avenue, west of its intersection with Golf Links Road and east of the Rangiora town centre. The Cam River/Ruataniwha runs along the rear of the property. The building is set well back from the road boundary but can be seen from the public domain. The extent of scheduling is the land parcel on which the dwelling is located.

HISTORY

George Hanmer (1833-1906) acquired RS 267 in the early 1850s and opened an accommodation house, called the Ashley Arms, on the property in 1854. Hanmer lost his license in 1855 but continued farming the property, which was sold by his brother Humphrey to Frederick Busch (Hans Johann Friedrich, 1833-1925) in 1878. Busch, his wife Sabina (nee Dew) and the first four of their eight children were living in the former accommodation house when it burnt to the ground in September 1880. Frederick Busch had emigrated from Germany to Nelson as a child and moved to Rangiora in the late 1870s. During the 1880s, in addition to farming, Busch was an auctioneer and general agent, unsuccessfully ran for a seat on the Rangiora Borough Council and the Rangiora and Mandeville Road Board and was a director of the Burton Brewery Company. It would appear that the Busch family may not have lived at 'Bellgrove' after the fire of 1880; instead residing at 'Northbrook' on the south side of Northbrook Road, east of Rangiora. During the 1890s Frederick Busch farmed and lived at 'Brooklands' near Southbridge before returning to 'Northbrook' in the late 1890s. Busch put 'Bellgrove' on the market in 1904 and it eventually sold in 1906 to William Cunningham, who may have leased the farm prior to this date. William Scoon purchased 'Bellgrove' in 1911 and, according to John Hendry, undertook unspecified alterations and/or additions at that time. Scoon sold 'Bellgrove' in 1916. The property was owned by members of the Inch family until the early 21st century and was subdivided to its current extent in 2023.

HISTORICAL AND SOCIAL SIGNIFICANCE

'Bellgrove' has historical significance for its association with the colonial pastoral development of Rangiora and its early owner/occupiers. The almost 100-year occupation of the farmhouse by members of the Inch family enhances the building's historic significance.

CULTURAL AND SPIRITUAL SIGNIFICANCE

'Bellgrove' has cultural value as a demonstration of the way of life of its early residents and several generations of the Inch family

ARCHITECTURAL AND AESTHETIC SIGNIFICANCE

'Bellgrove' has architectural significance as a Domestic Gothic Revival style villa that was possibly commissioned by George or Humphrey Hanmer in the 1870s, when the style was at the height of its popularity, or by Frederick Busch after the September 1880 fire. The designer/architect of the building is currently unknown.

TECHNOLOGICAL AND CRAFTSMANSHIP SIGNIFICANCE

'Bellgrove' has technological and craftsmanship value for the evidence it provides of Victorian building methods and materials.

CONTEXTUAL SIGNIFICANCE

'Bellgrove' has contextual value as a historic feature within its rural setting and in relation to other heritage farmhouses around Rangiora, including 'Brooklands' (H051) and 'Stratford Grove' (H121).

ARCHAEOLOGICAL AND SCIENTIFIC SIGNIFICANCE

As the house pre-dates 1900 its site has potential archaeological significance relating to the colonial development and use of the property.

SUMMARY OF HERITAGE SIGNIFICANCE

'Bellgrove' has overall significance to Rangiora and the Waimakariri district as a whole. The dwelling has historical significance for its association with the Busch and Inch families and cultural value as a demonstration of the way of life of its early residents. 'Bellgrove' has architectural significance as a Domestic Gothic Revival style villa and technological and craftsmanship value for its surviving Victorian fabric. 'Bellgrove' has contextual value as a historic feature on its rural property and its site has potential archaeological significance in view of the dwelling's age.

HERITAGE CATEGORY

B

REFERENCES

- *Press* 7 June 1880, p. 3; 28 July 1880, p. 4; 14 December 1881, p. 2; 7 May 1883, p. 3; 28 August 1883, p. 3; 20 May 1893, p. 9; 28 November 1898, p. 3; 2 June 1899, p. 1; 15 May 1904, p. 8; 16 December 1905, p. 16; 13 February 1906, p. 6; 24 April 1906, p. 11; 30 August 1916, p. 12; 11 March 1932, p. 3.
- *North Canterbury Gazette* 28 May 1937, p. 5.
- *Star* 21 September 1880, p. 3; 2 February 1897, p. 3.
- *Globe* 20 September 1880, p. 2; 21 September 1880, p. 2.
- *Ellesmere Guardian* 15 April 1891, p. 2.
- *North Canterbury Gazette* 28 May 1937, p. 5.
- *Lyttelton Times* 11 July 1855, p. 8; 11 August 1855, p. 2; 18 June 1878, p. 4; 15 July 1880, p. 4; 25 August 1880, p. 3; 22 May 1897, p. 1; 12 November 1898, p. 8; 26 November 1898, p. 8; 20 January 1906, p. 16.
- *Sun* 6 September 1916, p. 11.
- *Ashburton Guardian* 1 March 1901, p. 3.
- *Dairy News* 24 February 2016; available online.
- <http://www.heritage.org.nz/the-list/details/1821>
- <https://www.wikitree.com/wiki/Busch-960>
- DN Hawkins *Rangiora: the passing years and people in a Canterbury country town* Rangiora, 1993; available online.
- GR Macdonald *Dictionary of Canterbury Biographies*, Canterbury Museum; available online.
- Archives New Zealand.

REPORT COMPLETED

20 March 2019

AUTHOR

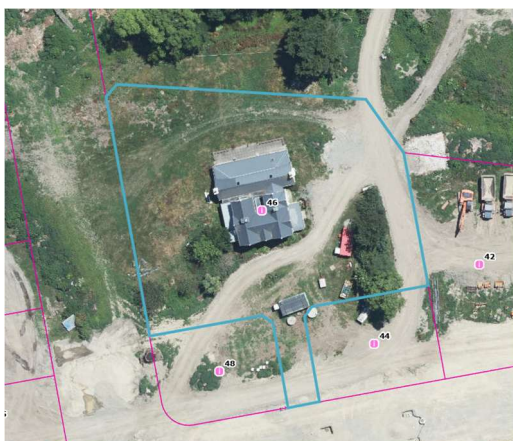
Dr Ann McEwan / Heritage Consultancy Services

REPORT UPDATED

7 April 2023

AUTHOR

Dr Ann McEwan



Extent of scheduling, 'Bellgrove', 52 Kippenberger Avenue, Rangiora.