

WAIMAKARIRI DISTRICT COUNCIL
HISTORIC HERITAGE ITEM RECORD FORM

2021 District Plan Item No.

HH019

HERITAGE ITEM NAME

former Rangiora Bowling, Tennis and Croquet Club pavilion / Rangiora Bowling Club pavilion

ADDRESS

25 Good Street, Rangiora

PHOTOGRAPH



(www)

DISTRICT PLAN ITEM NO.
(at time of assessment)

H078

HNZ LIST No. & CATEGORY

3787 / 2

LEGAL DESCRIPTION

Lot 7 DP 71

VALUATION NUMBER

2165208300

DATE OF CONSTRUCTION

pre-1905 and 1911

**ARCHITECT/DESIGNER/
BUILDER**

W Efford jnr, designer; Messrs Vincent & Golding, builders (1911 pavilion)

STYLE

Vernacular and English Domestic Revival

PHYSICAL DESCRIPTION

One- and two-storey composite building with rectangular footprint and gabled roof forms. Return veranda/balcony on west, south and east elevations is partly glazed. Shaped frieze boards and solid railing on balcony; some original latticework frieze remaining on east veranda. Varied fenestration, ram's horn finial on southern gable end, external chimney on north end of 1911 pavilion.

MATERIALS/STRUCTURE

Timber framing and weatherboard cladding, brick, tile and metal roofing.

ADDITIONS/ALTERATIONS

Pavilion conversion undertaken to pre-existing cottage; billiard room added (Messrs Gulliver & Rogers, builders, 1905). Veranda/balcony partially enclosed (date unknown). Tennis courts replaced by additional bowling green (1954). Toilet block and storage shed added (1960-61). New social and indoor bowling room erected to west side (1973-74). Strengthened and refurbished (2012).

SETTING

The building stands within the grounds of the Rangiora Bowling Club on a property bounded by Blakett Street to the south and Good Street to the north. The Rangiora Museum (H075) is located to the north, within the Good Street Reserve. The extent of scheduling is limited to the land parcel on which the pavilion stands, although it is noted that the bowling club grounds as a whole contribute to and support the heritage values of the building.

HISTORY

The Rangiora Bowling, Tennis and Croquet Club opened a new pavilion, which was in fact an addition to the original building, on its grounds on 28 October 1911. The club had been formed six years earlier and club secretary AS Clarkson was recognised at the opening event for his role in bringing the new building to fruition. Users of the billiard room attached to the original pavilion, a cottage already on the site when the property was purchased by the new club in early 1905, had raised quite a lot of the funds required for the pavilion extension. By 1910 membership of the club was c.200, many of them women. Since 2004-5 the club has solely been the preserve of the Rangiora Bowling Club, billiard, tennis and croquet having ceased on this site in 1930, 1954 and 2004-5 respectively. The bowling club's pavilion was recognised as a Waimakariri Landmark in April 2012 and in the same year it was highly commended in the Heritage Restoration category of the Canterbury Heritage Awards, having been strengthened and refurbished following the 2010/11 Canterbury earthquakes.

HISTORICAL AND SOCIAL SIGNIFICANCE

The Rangiora Bowling Club pavilion has high historical and social significance for its association with the Rangiora Bowling, Tennis and Croquet Club (est. 1905) and the development of the town's recreational facilities. The building reflects the increasing wealth and, consequently, leisure time of the town's second generation professional and commercial class. It is also notable that the club was open to women from its formation, whereas some contemporary sports clubs restricted membership to men only.

CULTURAL AND SPIRITUAL SIGNIFICANCE

The Rangiora Bowling Club pavilion has cultural significance because it demonstrates the way of life of club members for over a century and the esteem in which they hold the building and its contribution to the heritage values of Rangiora.

ARCHITECTURAL AND AESTHETIC SIGNIFICANCE

The 1911 addition to the Rangiora Bowling Club pavilion has architectural significance as a design by local builder William Efford junior. Rangiora building contractors Wadey and Efford erected the band rotunda in Victoria Park (1906) and the Catholic convent (1907), both in Rangiora, as well as the Methodist Church (1910-11) and St Barnabas's Anglican Church (1932-33) at Woodend. Like his father, William Efford junior (1877-1960) was a member of the bowling club and he ran the firm of Wadey and Efford on his own account from February 1910. The 1911 pavilion addition was designed to have verandas and balconies on three sides in order that members could overlook the club's courts and greens.

TECHNOLOGICAL AND CRAFTSMANSHIP SIGNIFICANCE

The Rangiora Bowling Club pavilion has technological and craftsmanship value for its timber construction and detailing. Arthur Vincent and John Golding were Rangiora builders active between 1880 and 1920. The firm also built the Rangiora Borough Council Chambers (1906-7, H077) and Golding Avenue is named for John Golding (1858-1920), who made the reredos for the Ashley Anglican Church in 1906. Hawkins notes that the pavilion was one of a very small number of major buildings erected in the town centre from wood after the mid-1880s.

CONTEXTUAL SIGNIFICANCE

The Rangiora Bowling Club pavilion has high contextual significance as a historic landmark visible from both Blackett and Good Streets on the northern edge of the town centre. Together with the Rangiora Museum (former BNZ manager's residence, 1881) and its associated replica cob cottage, the bowling pavilion provides evidence of the sporting and social life of the town and the community's ongoing support for preserving its historic buildings.

ARCHAEOLOGICAL AND SCIENTIFIC SIGNIFICANCE

As development likely occurred on this site before 1900, the property may have potential archaeological value.

SUMMARY OF HERITAGE SIGNIFICANCE

The Rangiora Bowling Club pavilion has high overall heritage significance to Rangiora and the district of Waimakariri as a whole. The building has high historical and social significance for its association with the Rangiora Bowling, Tennis and Croquet Club and the early 20th century development of the town's sporting facilities and cultural significance as a place of historic continuity and community esteem. The 1911 component of the Rangiora Bowling Club has architectural significance as an English Domestic Revival style design by club member William Efford junior and technological and craftsmanship value for its timber construction and detailing by Messrs Vincent and Golding. The Rangiora Bowling Club pavilion has high contextual significance as a historic landmark close to the town centre and in relation to the neighbouring Rangiora Museum; its site has some potential archaeological value in view of the property's likely pre-1900 development.

HERITAGE CATEGORY

A

REFERENCES

- *Press* 18 February 1905, p. 6; 4 February 1910, p. 1; 2 June 1911, p. 8; 26 July 1911, p. 5; 27 October 1911, p. 10; 30 October 1911, p. 9; 6 November 1937, p. 24; 8 September 2017, available online.
- *Lyttelton Times* 11 April 1905, p. 4; 28 April 1905, p. 4; 19 September 1908, p. 4; 28 May 1910, p. 10; 13 April 1911, p. 11; 2 May 1911, p. 6; 24 October 1911, p. 2.
- *Auckland Weekly News* 22 January 1941, p. 31.
- *Star* 11 August 1917, p. 9.
- <http://www.heritage.org.nz/the-list/details/3787>
- DN Hawkins *Rangiora: the passing years and people in a Canterbury country town* Rangiora, 1993.
- http://ketewaimakariri.peoplesnetworknz.info/people_of_the_waimakariri/topics/show/91-john-golding
- Archives New Zealand; available online.
- <https://www.flickr.com/photos/62111227@N08/19822993304/in/pool-teara/>
- <https://landmarks.waimakariri.govt.nz/rangiora-heritage/bowling-club-pavilion>
- <http://www.heritageawards.co.nz/entry/rangiora-bowling-club-pavilion/>
- <https://davidayers.wordpress.com/2012/04/15/rangiora-bowling-club-pavilion-recognised-as-landmark/>
- Fulton Ross Team Architecture 'Rangiora Bowling Club Condition Report' October 2007.
- Heritage Management Services and Fulton Ross Architects 'Rangiora Bowling Club Conservation Report' 2008.

REPORT COMPLETED

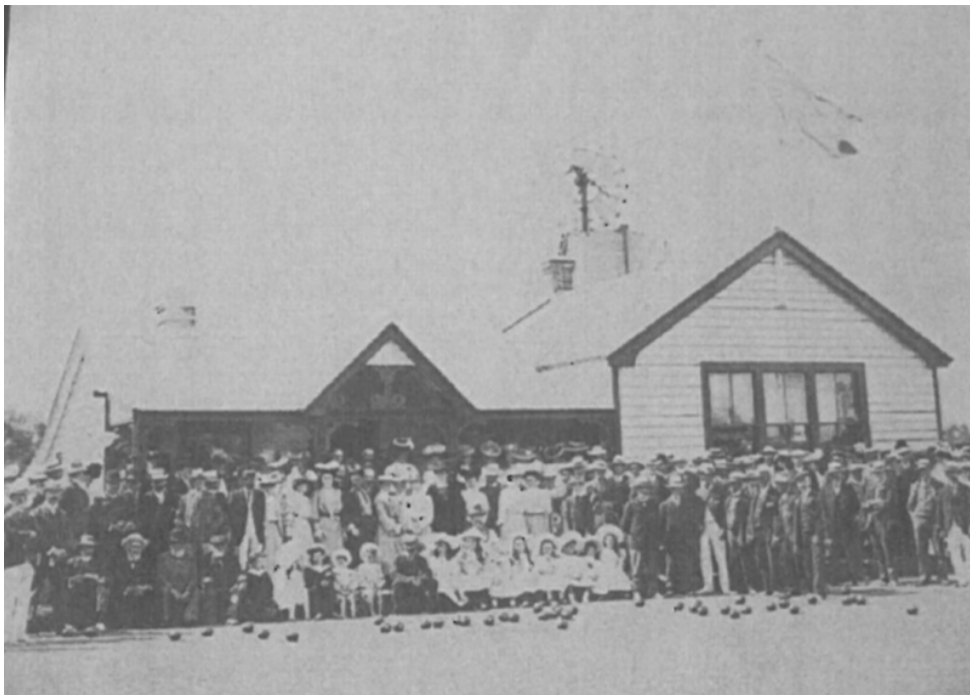
10 April 2019

AUTHOR

Dr Ann McEwan / Heritage Consultancy Services



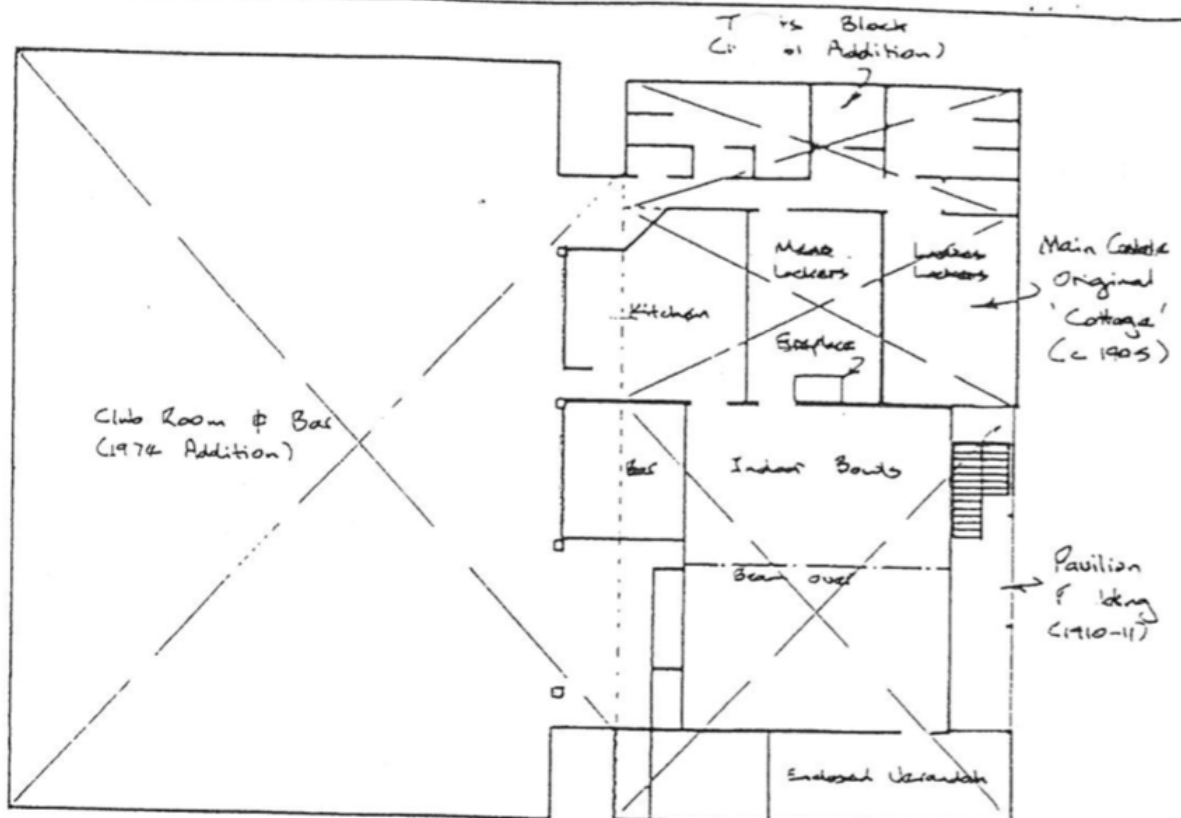
Extent of setting, heritage item outlined in turquoise, yellow lines delineate wider setting that supports heritage values of the pavilion, 25 Good Street, Rangiora.



1905 pavilion (cottage conversion + billiard room addition).



1911 pavilion addition.



GROUND FLOOR PLAN

Floor plan showing various stages of pavilion development.