

WAIMAKARIRI DISTRICT COUNCIL
HISTORIC HERITAGE ITEM RECORD FORM

2021 District Plan Item No. HH043
HERITAGE ITEM NAME former 'Inglewood Farm' stables
ADDRESS 98-100 Threlkelds Road, Ohoka
PHOTOGRAPH



(www)

DISTRICT PLAN ITEM NO. H025 **HNZ LIST No. & CATEGORY** 1771 / 2
(at time of assessment)

LEGAL DESCRIPTION Lot 1 DP 82641

SDC FILE NUMBER 2173069800

DATE OF CONSTRUCTION c. 1901?

**ARCHITECT/DESIGNER/
BUILDER** Unknown

STYLE Agricultural vernacular

PHYSICAL DESCRIPTION

Two, single-storey buildings aligned north-west to south-east having gabled roofs and L-shaped footprints. Vertical boarding set into gable ends. Clock with jockey motif (currently missing) set into gable end of smaller, northern building. Longer, southern stable has columns along principal, north-east elevation and a lean-to extension at north-west corner. Narrow gap between two buildings.

MATERIALS/STRUCTURE

Concrete, timber, corrugated metal roofing.

ADDITIONS/ALTERATIONS

South end of southern stable removed (between 1913 and c.1940). North-west lean-to on southern stable building enlarged/added (later 1940s/early 1950s).

SETTING

The stables are located on the south side of Threlkelds Road, south of Main Drain Road and to the east of Ohoka. The buildings can be seen from the roadway and are associated with a number of outbuildings as well as 'Inglewood', the former Threlkeld farmhouse (HH042). The extent of scheduling is the immediate setting of the stables, rather than the land parcel as a whole, and notwithstanding the potential archaeological values that may be present across the whole site.

HISTORY

Philip Collin Threlkeld (1832-1907) emigrated from England in 1855 and spent six years working as RH Rhodes' overseer at Purau on Banks' Peninsula, before taking up farming on his own account at Flaxton in 1862. Threlkeld married Eliza Cholmondeley (1841-1915), with whom he had eight children, in 1866 and went on to become a successful cattle and sheep breeder. Philip Threlkeld hosted the first meeting of the Flaxton school committee at his home in 1868, chaired the Mandeville and Rangiora Road Board in the late 1860s, and built the Inglewood Flour Mill (Evans' Mill) at Wetheral Railway Station, south of his farm, in 1890. It was reported in September 1906 that PC Threlkeld had just imported a Suffolk Punch stallion to add to his draught horse stud. Threlkeld sold a large part of his farm in 1897 and the remainder of the property was subdivided by his son in 1913. The homestead block was sold four years later. The property was owned by William Moir for 20 years (1919-38); it was then leased to Ken Austin, a thoroughbred horse breeder, who purchased 'Inglewood' in 1947. Austin established Inglewood Stud on the farm and hosted Queen Elizabeth the Queen Mother on two occasions during his tenure. The stud was in operation on the site until 1999, after which the property was subdivided to its current extent and then purchased by new owners. The farmhouse remains in private residential use and the historic stables are part of the dwelling's outbuildings.

HISTORIC AND SOCIAL SIGNIFICANCE

The former 'Inglewood Farm' stables have historical significance for their association with PC Threlkeld and his farming operations and, more generally, the farming history of North Canterbury. The stables are associated with the men and horses who worked on the farm and are also notable for their association with Ken Austin and the Inglewood Stud.

CULTURAL AND SPIRITUAL SIGNIFICANCE

The former 'Inglewood Farm' stables have cultural value as a demonstration of the way of life of the property's staff and workers.

ARCHITECTURAL AND AESTHETIC SIGNIFICANCE

The former 'Inglewood Farm' stables have aesthetic value as early 20th century agricultural buildings that were designed to be fit for purpose. The designer of the stables is currently unknown.

TECHNOLOGICAL AND CRAFTSMANSHIP SIGNIFICANCE

The former 'Inglewood Farm' stables have technological and craftsmanship value for the evidence they provide of early 20th century construction methods and materials.

CONTEXTUAL SIGNIFICANCE

The former 'Inglewood Farm' stables have contextual value for the contribution they make to the historic character of their rural property and in relation to the historic farmhouse on the same site (H024).

ARCHAEOLOGICAL AND SCIENTIFIC SIGNIFICANCE

Although the stables are believed to post-date 1900, their site has potential archaeological significance arising from the earlier use and development of the property.

SUMMARY OF HERITAGE SIGNIFICANCE

The former 'Inglewood Farm' stables have overall heritage significance to the Ohoka-Flaxton area and Waimakariri district as a whole. The stables have historical significance for their association with PC Threlkeld and his farming operations, as well as their 20th century

association with Ken Austin and the Inglewood Stud. The former 'Inglewood Farm' stables have cultural value as a demonstration of the way of life of their early users and aesthetic significance as agricultural vernacular structures that were designed to be fit for purpose. The former 'Inglewood Farm' stables have technological and craftsmanship value for the evidence they provide of early 20th century construction methods and materials and contextual value for the contribution they make to their rural setting and relationship with the historic 'Inglewood' farmhouse. The site of the stables has potential archaeological significance given the property's pre-1900 development and use.

HERITAGE CATEGORY

B

REFERENCES

- *Press* 23 November 1866, p. 2; 12 November 1867, p. 2; 30 December 1873, p. 3; 22 January 1874, p. 2; 4 October 1883, p. 7; 25 May 1891, p. 3; 4 November 1893, p. 9; 13 March 1913, p. 12; 19 November 1913, p. 6; 19 December 1913, p. 3; 22 September 2012, p. G16; 21 June 2008 & 29 November 2017, available online.
- *Lyttelton Times* 16 April 1862, p. 5; 24 January 1868, p. 3; 23 July 1868, p. 4; 27 June 1885, p. 3; 16 March 1894, p. 3; 29 September 1906, p. 5; 11 April 1907, p. 8.
- *Ashburton Guardian* 11 April 1907, p. 2; 31 January 1908, p. 3.
- *Sun* 16 August 1915, p. 1.
- *Oamaru Mail* 8 March 1894, p. 3.
- DN Hawkins *Beyond the Waimakariri* Christchurch, 2001; available online.
- Archives New Zealand; available online.
- <http://www.heritage.org.nz/the-list/details/1770>
- <http://www.heritage.org.nz/the-list/details/1771>
- <http://nzetc.victoria.ac.nz/tm/scholarly/tei-Cyc03Cycl-t1-body1-d4-d8-d13.html>
- <http://nzetc.victoria.ac.nz/tm/scholarly/tei-Cyc03Cycl-t1-body1-d4-d22.html>
- GR Macdonald Dictionary of Canterbury Biographies, Canterbury Museum; available online.
- <https://www.inglewoodstud.co.nz>
- Ohoka Stream Historic Walk; available online.

REPORT COMPLETED

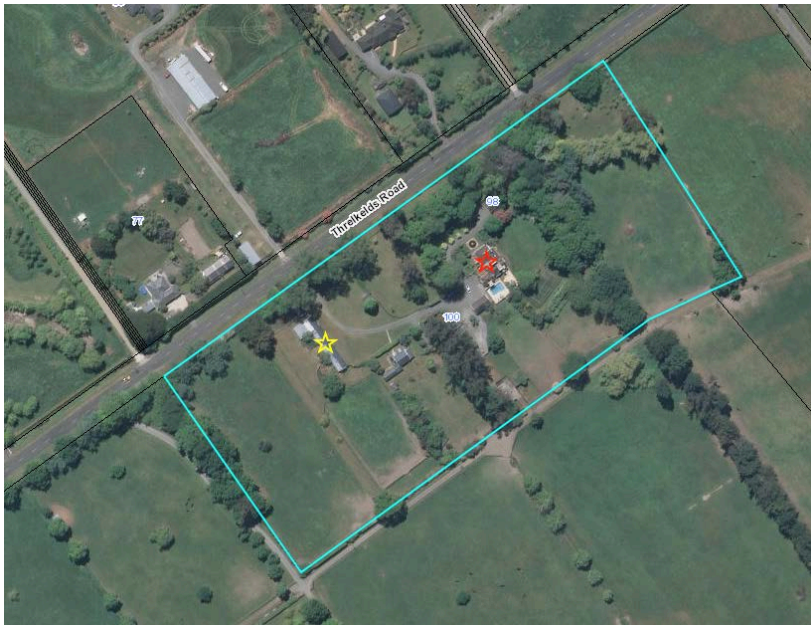
1 April 2019

AUTHOR

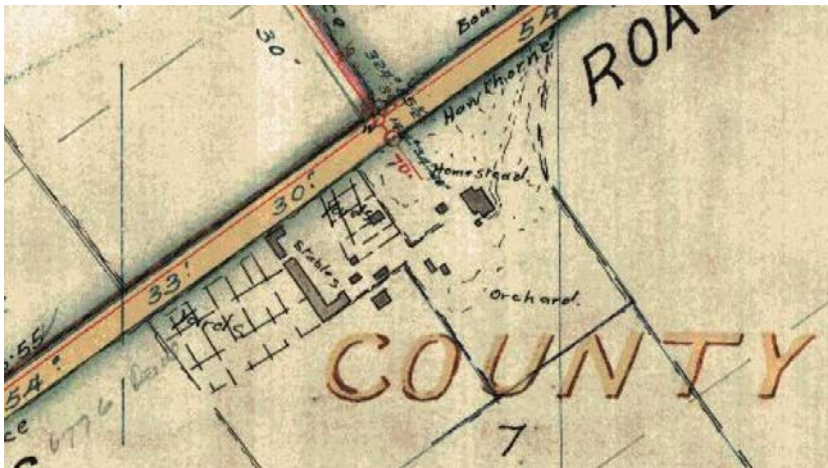
Dr Ann McEwan / Heritage Consultancy Services



Extent of scheduling, limited to immediate setting, former 'Inglewood Farm' stables, 98-100 Threlkelds Road, Ohoka.



Land parcel as a whole, with stables marked by yellow star and farmhouse by red star.



Detail of DP 3655, prepared for CM Threlkeld and dated 24 February 1913, showing layout of homestead and farm buildings, including stables. Quickmap.