

**WAIMAKARIRI DISTRICT COUNCIL**  
**HISTORIC HERITAGE ITEM RECORD FORM**

---

**2021 District Plan Item No.**

**HH024**

**HERITAGE ITEM NAME**

North Loburn School Fallen Scholars' Memorial

**ADDRESS**

813 Loburn Whiterock Road, Loburn

**PHOTOGRAPH**



(www)

**DISTRICT PLAN ITEM NO.**  
(at time of assessment)

New

**HNZ LIST NO. & CATEGORY**

n / a

**LEGAL DESCRIPTION**

Part RS 7738

**VALUATION NUMBER**

2149012100

**DATE OF CONSTRUCTION**

1919

**ARCHITECT/DESIGNER/  
BUILDER**

GWJ Parsons, monumental mason

**STYLE**

Column type monument

**PHYSICAL DESCRIPTION**

Classical column surmounted by funerary urn and mounted on a stepped base.

**MATERIALS/STRUCTURE**

Ruapuke granite, concrete.

**ADDITIONS/ALTERATIONS**

Addition of further names commemorating service in World War II (date unknown).

**SETTING**

The war memorial is situated within the grounds of North Loburn School, on the south-west side of Loburn Whiterock Road. The memorial is close to the road boundary and can be seen from the public doomain. The extent of setting is limited to the immediate environs of the memorial within the campus.

**HISTORY**

The fallen scholars' memorial at North Loburn School was unveiled on 20 March 1919, by the Hon George Forbes, MP, in memory of eight former pupils who had died serving in World War I. The monument was described as 'the first memorial of its kind to be erected in North Canterbury' (*Lyttelton Times* 21 March 1919, p. 5) when it was unveiled. The well-attended ceremony predated the signing of the Treaty of Versailles, which officially ended World War I, by several months. Additional names were added to the memorial to commemorate the local men who died serving in World War II. The memorial remains the focus for local ANZAC Day commemorations.

### **HISTORICAL AND SOCIAL SIGNIFICANCE**

The North Loburn War Memorial has high historic and social significance as the first war memorial erected in North Canterbury, for its association with the ongoing commemoration of World War I and II and, more generally, the proliferation of ornamental war memorials that were erected throughout New Zealand in the late 1910s and 1920s. It is directly connected to the people, and their families, whose names are inscribed upon the monument. Contrary to national war graves policy the ranks of the soldiers named on the monument are supplied.

### **CULTURAL AND SPIRITUAL SIGNIFICANCE**

The North Loburn War Memorial has cultural significance as a place of community identity and historic continuity. The memorial has commemorative significance and remains the focus for local ANZAC Day commemorations, especially for the school community.

### **ARCHITECTURAL AND AESTHETIC SIGNIFICANCE**

The North Loburn War Memorial has aesthetic value as a column and urn type monument which combines classical motifs with funerary associations.

### **TECHNOLOGICAL AND CRAFTSMANSHIP SIGNIFICANCE**

The North Loburn War Memorial has technological and craftsmanship significance for the quality of its stone construction and detailing. George Parsons was a leading Christchurch monumental mason whose business was established in Sydenham in 1877. He was also responsible for the Winchester Fallen Soldiers' Memorial (1920), the Temuka War Memorial (1922) and the Cust War Memorial (H091, 1922). Ruapuke granite was quarried on Ruapuke Island in Foveaux Strait from the 1880s in to the early 20<sup>th</sup> century.

### **CONTEXTUAL SIGNIFICANCE**

The North Loburn War Memorial has contextual significance as a historic feature within the grounds of North Loburn School and for the contribution it makes to the historic character of its roadside setting.

### **ARCHAEOLOGICAL AND SCIENTIFIC SIGNIFICANCE**

As the memorial post-dates 1900, any potential archaeological significance of the site would likely relate to its colonial use and development. North Loburn School opened in May 1880.

### **SUMMARY OF HERITAGE SIGNIFICANCE**

The North Loburn Fallen Scholars' War Memorial has high overall heritage significance to North Loburn and the district of Waimakariri. The memorial has high historical and social significance as the first war memorial erected in North Canterbury and for its association with the former pupils and local men who died serving in World War I and II. The North Loburn War Memorial has cultural significance given its commemorative purpose and aesthetic value as a conventional column and urn type monument. The North Loburn War Memorial has technological and craftsmanship significance for the quality of its Ruapuke granite construction and detailing by noted Christchurch monumental mason GWJ Parsons. The North

Loburn War Memorial has contextual significance as a historic feature within the grounds of North Loburn School. Any potential archaeological value of the memorial's site would likely relate to the late 19<sup>th</sup> century use and development of the school.

## HERITAGE CATEGORY

A

## REFERENCES

- *Press* 25 November 1878, p. 3; 29 January 1879, p. 5; 18 March 1919, p. 1; 21 March 1919, p. 7; 20 May 1930, p. 13.
- *Lyttelton Times* 21 February 1880, p. 4; 24 May 1880, p. 5; 28 December 1918, p. 12; 21 March 1919, p. 5.
- *Sun* 21 March 1919, p. 7.
- *Globe* 1 March 1880, p. 3.
- J Phillips & C Maclean *The Sorrow and the Pride – New Zealand War Memorials* Wellington, 1990.
- <https://nzhistory.govt.nz/media/photo/north-loburn-school-memorial>
- <http://christchurchcitylibraries.com/Heritage/Photos/Disc13/IMG0001.asp>
- <http://ketechristchurch.peoplesnetworknz.info/en/site/topics/show/2092-monumental-stonemasons-who-worked-in-linwood-cemetery#.XOBSPi2B1EI>

REPORT COMPLETED

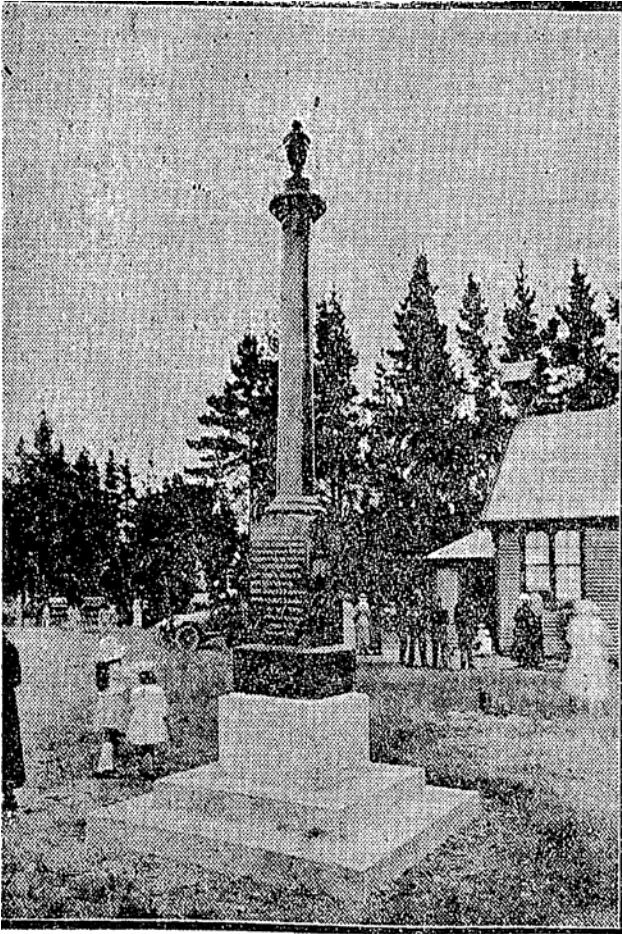
12 June 2019

AUTHOR

Dr Ann McEwan / Heritage Consultancy Services



Extent of setting, limited to immediate environs, North Loburn School, 813 Loburn Whiterock Road, Loburn.



Star 24 March 1919, p. 4.



ERECTED  
BY THE NORTH LOBURN SCHOOL  
PUPILS AND RESIDENTS IN MEMORY  
OF 21ST PUPILS WHO GAVE THEIR LIVES  
IN DEFENCE OF KING AND COUNTRY IN  
THE GREAT WAR 1914-1918  
CAPT. EDWIN B. DALBY R.N.R.  
LIEUT. ALEX. M. MARTIN  
CORPL. CHARLES N. MACKINTOSH  
PRIVATE CHARLES D. HARRIS  
WILLIAM H. FEATHER  
EDWARD FITZGIBBON  
THOMAS M. QUINLAN  
WALTER E. KING  
AND IN MEMORY OF THOSE WHO GAVE  
THEIR LIVES IN WORLD WAR II  
SGT. BLUNDEN J.R. PTE BINNIE G.E.  
PTE. BLUNDEN G.H. MET JERRELL G.