

WAIMAKARIRI DISTRICT COUNCIL
HISTORIC HERITAGE ITEM RECORD FORM

2021 District Plan Item No. **HH004**

HERITAGE ITEM NAME Kaiapoi footbridge [Mandeville Bridge]

ADDRESS Raven Quay - Trousselot Park, Kaiapoi River, Kaiapoi

PHOTOGRAPH



(HNZPT)

DISTRICT PLAN ITEM NO. H033 **HNZ LIST No. & CATEGORY** 1812 / 2
(at time of assessment)

LEGAL DESCRIPTION Part Lot 13 DP 1280 and legal river

VALUATION NUMBER 2176180300

DATE OF CONSTRUCTION 1873-74

**ARCHITECT/DESIGNER/
BUILDER** George Thornton, Canterbury Provincial Engineer,
designer; William Stocks, contractor

STYLE Pile & suspension footbridge

PHYSICAL DESCRIPTION

Wire rope footbridge with timber decking and piles. Four trussed arches over deck tension wire ropes. Wire mesh sides.

MATERIALS/STRUCTURE

Wire rope and mesh, timber.

ADDITIONS/ALTERATIONS

Bridge shortened following reclamation of north bank (c.1945). Post-EQ repairs (2011).

SETTING

The bridge spans the Kaiapoi River to the north-west of the town centre. It springs from the river bank adjacent to Raven Quay in the south-west and follows the line made by Black and Davie Streets; it is separated from the latter by Trousselot Park. The scheduled setting includes the bridge approaches, as well as the bridge itself.

HISTORY

Tenders were called for a footbridge across the Kaiapoi River by the Public Works Office of the Canterbury Provincial Council in September 1873. A local petition put before the council had made the case for a safe pedestrian bridge over the river at Kaiapoi, especially in the event that the traffic swing bridge was unusable. By early February 1874 the footbridge had been completed and the contractor was working on the approaches. The bridge was damaged in the 2011 Canterbury earthquake but has since been repaired. On Waitangi Day 2017 a new flag for Kaiapoi was unfurled for the first time featuring a stylised image of the bridge. Today the footbridge is known as the Mandeville Bridge, presumably due to its proximity to the Mandeville Hotel (est. c.1864) on the corner of Raven Quay and Black Street. Historically it was simply called the Kaiapoi footbridge.

HISTORIC AND SOCIAL SIGNIFICANCE

The Kaiapoi footbridge has high historic significance for its association with the colonial development of Kaiapoi and the provision of key transport infrastructure in the district by the Canterbury Provincial Council. The bridge is also significant as one of a number built to span the Kaiapoi and Waimakariri Rivers in the 19th and early 20th centuries, especially those connecting the east and west sides of Kaiapoi township.

CULTURAL AND SPIRITUAL SIGNIFICANCE

The Kaiapoi footbridge has cultural significance as a place of community identity and historic continuity. It demonstrates the historic way of life of people in the township who were greatly affected by the flow of the river at times of flood and is valued by the community as a historic feature.

ARCHITECTURAL AND AESTHETIC SIGNIFICANCE

The Kaiapoi footbridge has aesthetic significance for its pile and suspension design from the office of George Thornton, Canterbury Provincial Engineer. Thornton (1828-1914), a civil engineer, was born in Yorkshire and lived in Australia before settling in New Zealand in 1862. From 1863 until 1876 he worked for the Canterbury Provincial Council, going in to private practice after its abolition. During his time with the provincial council Thornton designed the Godley Head lighthouse (1864) and let the contract for the Rakaia railway bridge in 1869.

TECHNOLOGICAL AND CRAFTSMANSHIP SIGNIFICANCE

The Kaiapoi footbridge has technological significance as a pile and suspension bridge erected by Christchurch contractor and monumental mason William Stocks (c.1838-94). In 1880 Stocks was the successful tenderer to complete the nave of Christ Church Anglican Cathedral; he was also the contractor for the Waimakariri Gorge Bridge (1876-77).

CONTEXTUAL SIGNIFICANCE

The Kaiapoi footbridge has contextual significance as a local landmark and for its relationship to other Kaiapoi bridges, including the Mafeking footbridge (1900) beyond the northern terminus of Raven Quay.

ARCHAEOLOGICAL AND SCIENTIFIC SIGNIFICANCE

As the footbridge pre-dates 1900, its site has potential archaeological significance relating to both the bridge's construction and the river's historic use and development.

SUMMARY OF HERITAGE SIGNIFICANCE

The Kaiapoi footbridge [Mandeville Bridge] has high overall heritage significance to Kaiapoi and to Waimakariri district as a whole. The bridge has high historic significance as a key item of Kaiapoi's transport infrastructure erected by the Canterbury Provincial Council and cultural significance as a place of community identity and historic continuity. The Kaiapoi footbridge has aesthetic significance for its design by the Provincial Engineer George Thornton and technological significance for its construction by Christchurch contractor William Stocks. The Kaiapoi footbridge has contextual significance as a local landmark and its site has potential archaeological significance relating to the bridge's construction and the historic use and development of the Kaiapoi River.

HERITAGE CATEGORY

A

REFERENCES

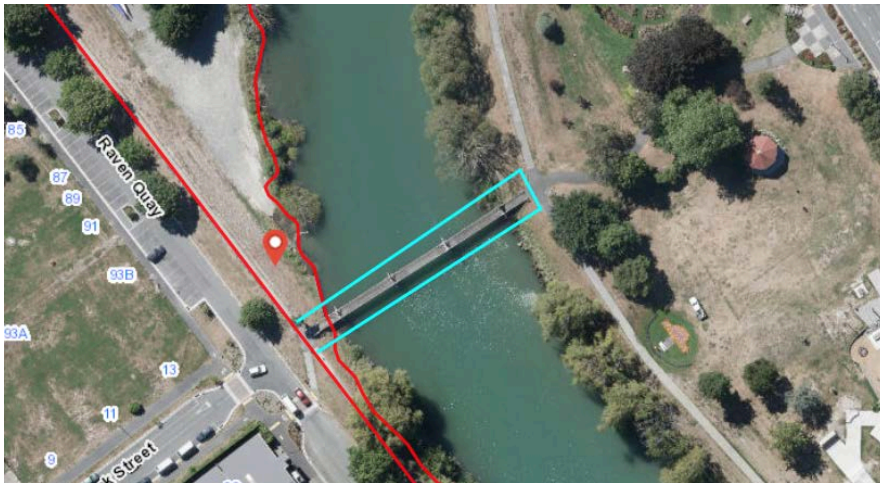
- *Press* 19 February 1874, p. 2; 16 July 1874, p. 2; 31 December 1888, p. 5; 1 October 1895, p. 3; 14 June 1900, p. 7; 10 August 1900, p. 7; 10 February 1911, p. 4; 26 August 1911, p. 11.
- *Lyttelton Times* 1 September 1873, p. 1; 19 November 1873, p. 2; 9 February 1874, p. 2; 17 December 1886, p. 5.
- *Star* 9 February 1874, p. 2; 27 April 1888, p. 4; 1 October 1894, p. 2.
- *Globe* 18 February 1880, p. 3.
- *North Canterbury Gazette* 27 October 1933, p. 3.
- <http://www.heritage.org.nz/the-list/details/1812>
- R Logan *Waimakariri – The Story of Canterbury's 'River of Cold Rushing Water'* Christchurch, 1987.
- <https://portlandflag.files.wordpress.com/2017/03/vexilloid-tabloid-063-apr17.pdf>
- <http://www.ipenz.org.nz/heritage/bio-detail.cfm?id=53>

REPORT COMPLETED

8 February 2019

AUTHOR

Dr Ann McEwan / Heritage Consultancy Services



Extent of scheduling, encompassing the bridge and its approaches, Raven Quay / Trousselot Park, Kaiapoi.